

For Research Use Only

# CHCHD2 Recombinant antibody

Catalog Number: 82702-1-RR

Featured Product



## Basic Information

Catalog Number:

82702-1-RR

Size:

100ul, Concentration: 500 ug/ml by Nanodrop;

Source:

Rabbit

Isotype:

IgG

Immunogen Catalog Number:

AG13752

GenBank Accession Number:

BC003079

GeneID (NCBI):

51142

UNIPROT ID:

Q9Y6H1

Full Name:

coiled-coil-helix-coiled-coil-helix domain containing 2

Calculated MW:

151 aa, 16 kDa

Observed MW:

16 kDa

Purification Method:

Protein A purification

CloneNo.:

4A12

Recommended Dilutions:

WB 1:2000-1:10000

IF/ICC 1:250-1:1000

## Applications

Tested Applications:

WB, IF/ICC, ELISA

Species Specificity:

human, rat

Positive Controls:

WB : HEK-293 cells, LNCaP cells, Jurkat cells, K-562 cells, HSC-T6 cells

IF/ICC : HepG2 cells,

## Background Information

CHCHD2 is a widely expressed 16.7-kDa mitochondrion-localized protein. CHCHD2 contains a C-terminal CHCH (coiled-coil helix coiled-coil helix) domain. Mutations in CHCHD2 gene have been reported in autosomal dominant Parkinson's disease (ADPD). CHCHD2 is a bi-organellar mediator of oxidative phosphorylation, playing crucial roles in regulating electron flow in the mitochondrial electron transport chain and acting as a nuclear transcription factor for a cytochrome c oxidase subunit (COX4L2) and itself in response to hypoxic stress. CHCHD2 also regulates cell migration and differentiation, mitochondrial cristae structure, and apoptosis (PMID: 33967741).

## Storage

Storage:

Store at -20°C. Stable for one year after shipment.

Storage Buffer:

PBS with 0.02% sodium azide and 50% glycerol pH 7.3.

Aliquoting is unnecessary for -20°C storage

\*\*\* 20ul sizes contain 0.1% BSA

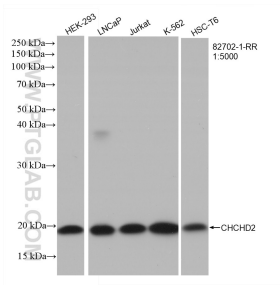
For technical support and original validation data for this product please contact:

T: 1 (888) 4PTGLAB (1-888-478-4522) (toll free in USA), or 1(312) 455-8498 (outside USA)

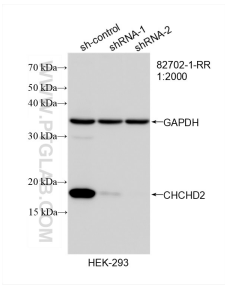
E: [proteintech@ptglab.com](mailto:proteintech@ptglab.com)  
W: [ptglab.com](http://ptglab.com)

This product is exclusively available under Proteintech Group brand and is not available to purchase from any other manufacturer.

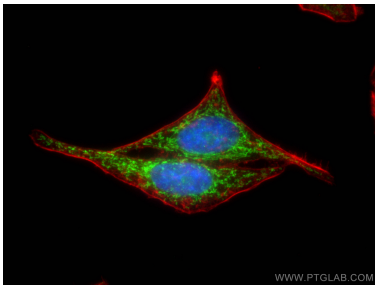
Selected Validation Data



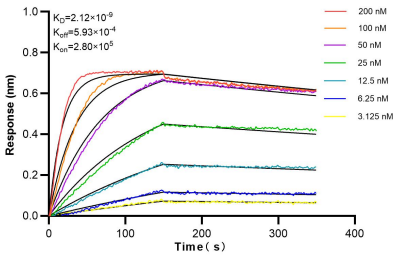
Various lysates were subjected to SDS PAGE followed by western blot with 82702-1-RR (CHCHD2 antibody) at dilution of 1:5000 incubated at room temperature for 1.5 hours.



WB result of CHCHD2 antibody (82702-1-RR; 1:2000; incubated at room temperature for 1.5 hours) with sh-Control and sh-CHCHD2 transfected HEK-293 cells.



Immunofluorescent analysis of (4% PFA) fixed HepG2 cells using CHCHD2 antibody (82702-1-RR, Clone: 4A12 ) at dilution of 1:500 and CoraLite®488-Conjugated AffiniPure Goat Anti-Rabbit IgG(H+L), CL594-Phalloidin (red).



Biolayer interferometry (BLI) kinetic assays of 82702-1-RR against Human CHCHD2 were performed. The affinity constant is 2.12 nM.