

For Research Use Only

GM130;GOLGA2 Recombinant antibody

Catalog Number:82705-8-RR



Basic Information

Catalog Number: 82705-8-RR	GenBank Accession Number: BC014188	Purification Method: Protein A purification
Size: 100ul , Concentration: 400 µg/ml by Nanodrop;	GeneID (NCBI): 2801	CloneNo.: 1M17
Source: Rabbit	Full Name: golgi autoantigen, golgin subfamily a, 2	Recommended Dilutions: WB 1:1000-1:8400
Isotype: IgG	Calculated MW: 111 kDa	
Immunogen Catalog Number: AG1848	Observed MW: 130-140 kDa	

Applications

Tested Applications: WB, ELISA	Positive Controls: WB : HeLa cells, HepG2 cells, HEK-293 cells, Jurkat cells, K-562 cells, HSC-T6 cells
Species Specificity: Human, rat	

Background Information

GOLGA2, also known as GM130, is a 130 kDa cis-Golgi matrix protein which is one component of the detergent and salt resistant Golgi matrix. It is a peripheral membrane protein highly bound to Golgi membrane and localized mainly at the cytoplasmic face of cis-Golgi membrane. Together with its interacting partner proteins, including p115, giantin, GRASP65, and Rab GTPase, GOLGA2/GM130 is involved in the regulation of ER-to-Golgi transport and also in the maintenance of the Golgi structure. Emerging evidence suggest that the GOLGA2/GM130 has potential roles in the control of glycosylation, cell cycle progression, and higher order cell functions such as cell polarization and directed cell migration. (PMID: 20197635)

Storage

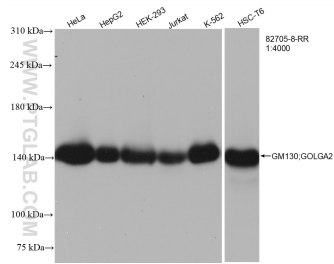
Storage:
Store at -20°C. Stable for one year after shipment.
Storage Buffer:
PBS with 0.02% sodium azide and 50% glycerol pH 7.3.
Aliquoting is unnecessary for -20°C storage

*** 20ul sizes contain 0.1% BSA

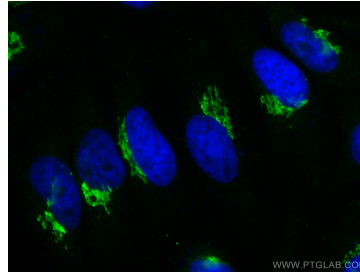
For technical support and original validation data for this product please contact:
T: 1 (888) 4PTGLAB (1-888-478-4522) (toll free in USA), or 1(312) 455-8498 (outside USA)
E: proteintech@ptglab.com
W: ptglab.com

This product is exclusively available under Proteintech Group brand and is not available to purchase from any other manufacturer.

Selected Validation Data



Various lysates were subjected to SDS PAGE followed by western blot with 82705-8-RR (GM130;GOLGA2 antibody) at dilution of 1:4000 incubated at room temperature for 1.5 hours.



Immunofluorescent analysis of (4% PFA) fixed HeLa cells using GM130;GOLGA2 antibody (82705-8-RR, Clone: 1M17) at dilution of 1:400 and CoraLite® 488-Conjugated AffiniPure Goat Anti-Rabbit IgG(H+L).