

For Research Use Only

Mouse FGF-21 Recombinant antibody, PBS Only (Detector)

Catalog Number: 82706-6-PBS



Basic Information

Catalog Number: 82706-6-PBS	GenBank Accession Number: NM_020013	Purification Method: Protein A purification
Size: 100ug , Concentration: 1 mg/ml by Nanodrop;	GeneID (NCBI): 56636	CloneNo.: 240221D10
Source: Rabbit	UNIPROT ID: Q9JJN1	
Isotype: IgG	Full Name: fibroblast growth factor 21	
	Calculated MW: 23kd	

Applications

Tested Applications:
IF/ICC, Cytometric bead array, Indirect ELISA

Species Specificity:
mouse

Product Information

82706-6-PBS targets FGF-21 as part of a matched antibody pair:

MP00366-1: 82706-5-PBS capture and 82706-6-PBS detection (validated in Cytometric bead array)

Unconjugated rabbit recombinant monoclonal antibody in PBS only (BSA and azide free) storage buffer at a concentration of 1 mg/mL, ready for conjugation. Created using Proteintech's proprietary in-house recombinant technology. Recombinant production enables unrivalled batch-to-batch consistency, easy scale-up, and future security of supply.

This conjugation ready format makes antibodies ideal for use in many applications including: ELISAs, multiplex assays requiring matched pairs, mass cytometry, and multiplex imaging applications. Antibody use should be optimized by the end user for each application and assay.

Storage

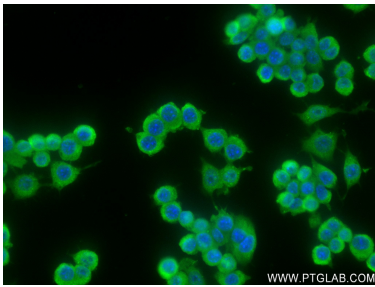
Storage:
Store at -80°C.

Storage Buffer:
PBS Only

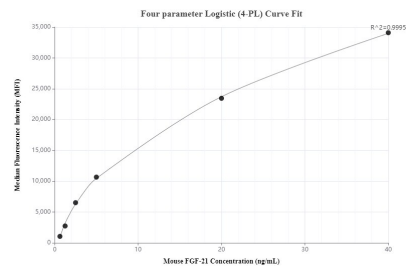
For technical support and original validation data for this product please contact:
T: 1 (888) 4PTGLAB (1-888-478-4522) (toll free in USA), or 1(312) 455-8498 (outside USA)
E: proteintech@ptglab.com
W: ptglab.com

This product is exclusively available under Proteintech Group brand and is not available to purchase from any other manufacturer.

Selected Validation Data



Immunofluorescent analysis of (4% PFA) fixed LPS and Brefeldin A treated RAW 264.7 cells using FGF-21 antibody (82706-6-RR, Clone: 240221D10) at dilution of 1:250 and CoraLite®488-Conjugated AffiniPure Goat Anti-Rabbit IgG(H+L) (SA00013-2). This data was developed using the same antibody clone with 82706-6-PBS in a different storage buffer formulation.



Cytometric bead array standard curve of MP00366-1, MOUSE FGF-21 Recombinant Matched Antibody Pair, PBS Only. Capture antibody: 82706-5-PBS. Detection antibody: 82706-6-PBS. Standard: Eg0259. Range: 0.625-40ng/mL.