

For Research Use Only

# FGF-21 Recombinant antibody

Catalog Number: 82706-6-RR



## Basic Information

Catalog Number:

82706-6-RR

Size:

100ul, Concentration: 1000 ug/ml by

Nanodrop;

Source:

Rabbit

Isotype:

IgG

GenBank Accession Number:

NM\_020013

GeneID (NCBI):

56636

UNIPROT ID:

Q9JJN1

Full Name:

fibroblast growth factor 21

Calculated MW:

23kd

Purification Method:

Protein A purification

CloneNo.:

240221D10

Recommended Dilutions:

IF/ICC 1:125-1:500

## Applications

Tested Applications:

IF/ICC, ELISA

Species Specificity:

Mouse

Positive Controls:

IF/ICC : LPS and Brefeldin A treated RAW 264.7 cells,

## Background Information

Fibroblast growth factor 21 (FGF21), a member of the FGF superfamily, has emerged as an important metabolic regulator. FGF21 is produced in the liver, adipocytes and skeletal muscle and regulates glucose, energy and lipid metabolism. FGF21 is a stress-responsive hepatokine which is induced in the liver as a response to injury, regeneration, hepatocarcinogenesis and during kidney dysfunction. FGF21 is primarily metabolized in the kidney and renal secretion is the major route of FGF21 elimination. Its plasma levels increase according to the decline in renal function in patients with chronic and acute renal dysfunction.

## Storage

Storage:

Store at -20°C. Stable for one year after shipment.

Storage Buffer:

PBS with 0.02% sodium azide and 50% glycerol pH 7.3.

Aliquoting is unnecessary for -20°C storage

\*\*\* 20ul sizes contain 0.1% BSA

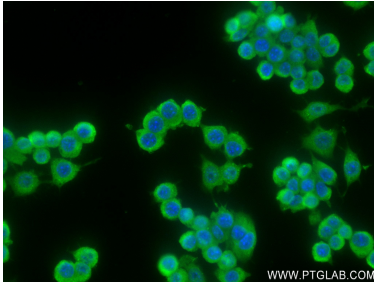
For technical support and original validation data for this product please contact:

T: 1 (888) 4PTGLAB (1-888-478-4522) (toll free  
in USA), or 1(312) 455-8498 (outside USA)

E: [proteintech@ptglab.com](mailto:proteintech@ptglab.com)  
W: [ptglab.com](http://ptglab.com)

This product is exclusively available under Proteintech Group brand and is not available to purchase from any other manufacturer.

## Selected Validation Data



Immunofluorescent analysis of (4% PFA) fixed LPS and Brefeldin A treated RAW 264.7 cells using FGF-21 antibody (82706-6-RR, Clone: 240221D10 ) at dilution of 1:250 and CoraLite®488-Conjugated AffiniPure Goat Anti-Rabbit IgG(H+L) (SA00013-2).