

For Research Use Only

# IRS1 Recombinant antibody

Catalog Number: 82730-10-RR



## Basic Information

<b>Catalog Number:</b> 82730-10-RR	<b>GenBank Accession Number:</b> BC053895	<b>Purification Method:</b> Protein A purification
<b>Size:</b> 100ul , Concentration: 1000 µg/ml by Nanodrop;	<b>GeneID (NCBI):</b> 3667	<b>CloneNo.:</b> 250510A12
<b>Source:</b> Rabbit	<b>UNIPROT ID:</b> P35568	<b>Recommended Dilutions:</b> WB: 1:2000-1:10000 IF/ICC: 1:50-1:500
<b>Isotype:</b> IgG	<b>Full Name:</b> insulin receptor substrate 1	
<b>Immunogen Catalog Number:</b> AG11714	<b>Calculated MW:</b> 1242 aa, 132 kDa	
	<b>Observed MW:</b> 160-185 kDa	

## Applications

<b>Tested Applications:</b> WB, IF/ICC, ELISA	<b>Positive Controls:</b>
<b>Species Specificity:</b> human	<b>WB :</b> A549 cells, A431 cells, HEK-293 cells, HepG2 cells <b>IF/ICC :</b> MCF-7 cells,

## Background Information

Ins receptor substrate 1 (IRS1) was the first cloned and characterized member of the IRS family which are involved in ins receptor (IR) and ins-like growth factor I receptor (IGF-IR) signaling. IRS1 is phosphorylated by ins receptor tyrosine kinase and is involved in various cellular processes including DNA repair fidelity, transcriptional activity, and cell growth can support tumor development and progression. Mutations in this gene are associated with type II diabetes and susceptibility to ins resistance. IRS1 has a predicted molecular weight of 132 kDa, however, as a result of its extensive serine phosphorylation it separates on a SDS gel as a band of approximately 160-185 kDa.

## Storage

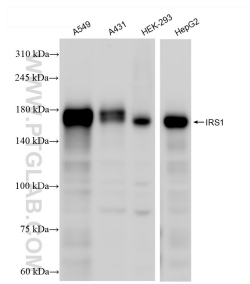
**Storage:**  
Store at -20°C. Stable for one year after shipment.  
**Storage Buffer:**  
PBS with 0.02% sodium azide and 50% glycerol, pH7.3  
**Aliquoting is unnecessary for -20°C storage**

\*\*\* 20ul sizes contain 0.1% BSA

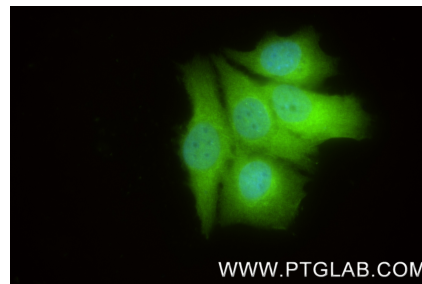
For technical support and original validation data for this product please contact:  
T: 1 (888) 4PTGLAB (1-888-478-4522) (toll free in USA), or 1(312) 455-8498 (outside USA)  
E: [proteintech@ptglab.com](mailto:proteintech@ptglab.com)  
W: [ptglab.com](http://ptglab.com)

This product is exclusively available under Proteintech Group brand and is not available to purchase from any other manufacturer.

## Selected Validation Data



Various lysates were subjected to SDS PAGE followed by western blot with 82730-10-RR (IRS1 antibody) at dilution of 1:5000 incubated at room temperature for 1.5 hours.



Immunofluorescent analysis of (4% PFA) fixed MCF-7 cells using IRS1 antibody (82730-10-RR, Clone: 250510A12 ) at dilution of 1:200 and CoraLite® 488-Conjugated Goat Anti-Rabbit IgG(H+L) (SA00013-2).