

For Research Use Only

SERPING1/C1 Inactivator Recombinant antibody, PBS Only

Catalog Number: 82731-1-PBS



Basic Information

Catalog Number: 82731-1-PBS	GenBank Accession Number: BC011171	Purification Method: Protein A purification
Size: 100ug , Concentration: 1mg/ml by Nanodrop;	GeneID (NCBI): 710	CloneNo.: 3H7
Source: Rabbit	UNIPROT ID: P05155	
Isotype: IgG	Full Name: serpin peptidase inhibitor, clade G (C1 inhibitor), member 1	
Immunogen Catalog Number: AG2819	Calculated MW: 500 aa, 55 kDa	
	Observed MW: 100 kDa	

Applications

Tested Applications:
WB, Indirect ELISA

Species Specificity:
human

Background Information

SERPING1, also known as C1 Inhibitor (C1INH), is a member of the Serine proteinase inhibitor family. Its main function is the inhibition of the complement system to prevent spontaneous activation. It inhibits activated C1r and C1s of the first complement component and thus regulates complement activation. Deficiency of this protein is associated with hereditary angioneurotic oedema (HANE). C1INH is the most heavily glycosylated plasma protein. Of its 95-105 kDa apparent molecular mass, the protein moiety of 500 aa accounts for only 55 kDa. The native 105 kDa form of C1INH could be cleaved into 60-65 kDa fragments.

Storage

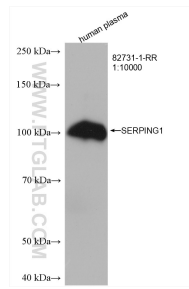
Storage:
Store at -80°C.

Storage Buffer:
PBS Only

For technical support and original validation data for this product please contact:
T: 1 (888) 4PTGLAB (1-888-478-4522) (toll free in USA), or 1(312) 455-8498 (outside USA)
E: proteintech@ptglab.com
W: ptglab.com

This product is exclusively available under Proteintech Group brand and is not available to purchase from any other manufacturer.

Selected Validation Data



human plasma were subjected to SDS PAGE followed by western blot with 82731-1-RR (SERPING1 antibody) at dilution of 1:10000 incubated at room temperature for 1.5 hours. This data was developed using the same antibody clone with 82731-1-PBS in a different storage buffer formulation.