

For Research Use Only

# SERPINE2 Recombinant antibody, PBS Only



Catalog Number: 82732-5-PBS

## Basic Information

<b>Catalog Number:</b> 82732-5-PBS	<b>GenBank Accession Number:</b> BC015663	<b>Purification Method:</b> Protein A purification
<b>Size:</b> 100ug , Concentration: 1mg/ml by Nanodrop;	<b>GeneID (NCBI):</b> 5270	<b>CloneNo.:</b> 5016
<b>Source:</b> Rabbit	<b>UNIPROT ID:</b> P07093	
<b>Isotype:</b> IgG	<b>Full Name:</b> serpin peptidase inhibitor, clade E (nexin, plasminogen activator inhibitor type 1), member 2	
<b>Immunogen Catalog Number:</b> AG1830	<b>Calculated MW:</b> 44 kDa	
	<b>Observed MW:</b> 44-50 kDa	

## Applications

**Tested Applications:**  
Indirect ELISA, WB

**Species Specificity:**  
rat, mouse, human

## Background Information

SERPINE2 also called protease nexin-1 or glial-derived neurite promoting factor, is a member of the serine protease inhibitor (SERPIN) superfamily. It would be a potent inhibitor of the urokinase-plasminogen activator (uPA), tissue-type PA (tPA), thrombin, trypsin, factor Xia, and prostasin. SERPINE2 is widely expressed in various tissues, including endothelial cells, fibroblasts, smooth muscle cells, tumor cells, glial cells, neurons, and placental cells.

## Storage

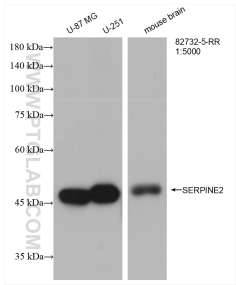
**Storage:**  
Store at -80°C.

**Storage Buffer:**  
PBS Only

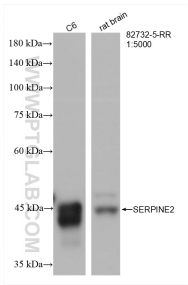
For technical support and original validation data for this product please contact:  
T: 1 (888) 4PTGLAB (1-888-478-4522) (toll free in USA), or 1(312) 455-8498 (outside USA)  
E: [proteintech@ptglab.com](mailto:proteintech@ptglab.com)  
W: [ptglab.com](http://ptglab.com)

This product is exclusively available under Proteintech Group brand and is not available to purchase from any other manufacturer.

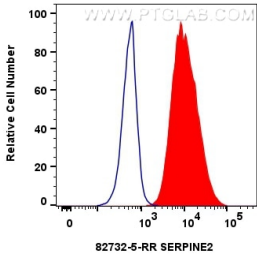
Selected Validation Data



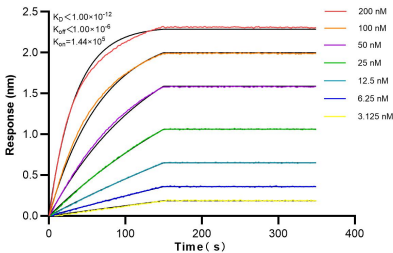
Various lysates were subjected to SDS PAGE followed by western blot with 82732-5-RR (SERPINE2 antibody) at dilution of 1:5000 incubated at room temperature for 1.5 hours. This data was developed using the same antibody clone with 82732-5-PBS in a different storage buffer formulation.



Various lysates were subjected to SDS PAGE followed by western blot with 82732-5-RR (SERPINE2 antibody) at dilution of 1:5000 incubated at room temperature for 1.5 hours. This data was developed using the same antibody clone with 82732-5-PBS in a different storage buffer formulation.



1x10<sup>6</sup> A549 cells were intracellularly stained with 0.25 ug SERPINE2 Recombinant antibody (82732-5-RR, Clone:5O16) and CoraLite®488-Conjugated AffiniPure Goat Anti-Rabbit IgG(H+L) (SA00013-2)(red), or 0.25 ug Rabbit IgG control Rabbit PolyAb (30000-O-AP) (blue). Cells were fixed with 4% PFA and permeabilized with Flow Cytometry Perm Buffer (PF00011-C). This data was developed using the same antibody clone with 82732-5-PBS in a different storage buffer formulation.



Biolayer interferometry (BLI) kinetic assays of 82732-5-RR against Human SERPINE2 were performed. The affinity constant is below 1 pM.