

For Research Use Only

SERPINE2 Recombinant antibody

Catalog Number: 82732-5-RR



Basic Information

Catalog Number:

82732-5-RR

Size:

100ul , Concentration: 1000 ug/ml by

Nanodrop;

Source:

Rabbit

Isotype:

IgG

Immunogen Catalog Number:

AG1830

GenBank Accession Number:

BC015663

GeneID (NCBI):

5270

UNIPROT ID:

P07093

Full Name:

serpin peptidase inhibitor, clade E

(nexin, plasminogen activator

inhibitor type 1), member 2

Calculated MW:

44 kDa

Observed MW:

44-50 kDa

Purification Method:

Protein A purification

CloneNo.:

5016

Recommended Dilutions:

WB 1:2000-1:10000

Applications

Tested Applications:

WB, FC (Intra), ELISA

Species Specificity:

human, mouse, rat

Positive Controls:

WB : U-87 MG cells, C6 cells, U-251 cells, mouse brain tissue, rat brain tissue

Background Information

SERPINE2 also called protease nexin-1 or glial-derived neurite promoting factor, is a member of the serine protease inhibitor (SERPIN) superfamily. It would be a potent inhibitor of the urokinase-plasminogen activator (uPA), tissue-type PA (tPA), thrombin, trypsin, factor Xla, and prostasin. SERPINE2 is widely expressed in various tissues, including endothelial cells, fibroblasts, smooth muscle cells, tumor cells, glial cells, neurons, and placental cells.

Storage

Storage:

Store at -20°C. Stable for one year after shipment.

Storage Buffer:

PBS with 0.02% sodium azide and 50% glycerol pH 7.3.

Aliquoting is unnecessary for -20°C storage

*** 20ul sizes contain 0.1% BSA

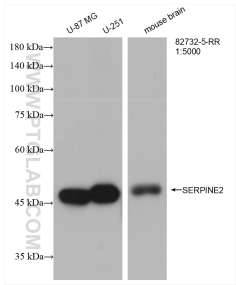
For technical support and original validation data for this product please contact:

T: 1 (888) 4PTGLAB (1-888-478-4522) (toll free in USA), or 1(312) 455-8498 (outside USA)

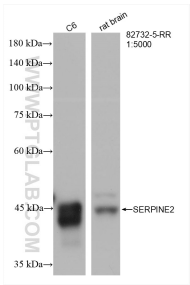
E: proteintech@ptglab.com
W: ptglab.com

This product is exclusively available under Proteintech Group brand and is not available to purchase from any other manufacturer.

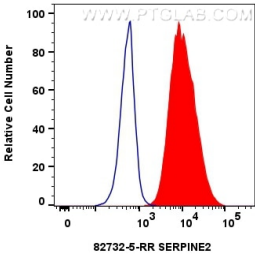
Selected Validation Data



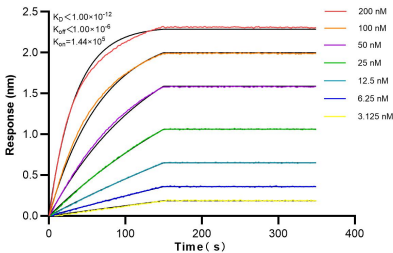
Various lysates were subjected to SDS PAGE followed by western blot with 82732-5-RR (SERPINE2 antibody) at dilution of 1:5000 incubated at room temperature for 1.5 hours.



Various lysates were subjected to SDS PAGE followed by western blot with 82732-5-RR (SERPINE2 antibody) at dilution of 1:5000 incubated at room temperature for 1.5 hours.



1x10⁶ A549 cells were intracellularly stained with 0.25 ug SERPINE2 Recombinant antibody (82732-5-RR, Clone:5O16) and CoraLite® 488-Conjugated Goat Anti-Rabbit IgG(H+L) (SA00013-2) (red), or 0.25 ug Rabbit IgG control Rabbit PolyAb (30000-O-AP) (blue). Cells were fixed with 4% PFA and permeabilized with Flow Cytometry Perm Buffer (PF00011-C).



Biolayer interferometry (BLI) kinetic assays of 82732-5-RR against Human SERPINE2 were performed. The affinity constant is below 1 pM.