

For Research Use Only

TOP2A Recombinant antibody

Catalog Number: 82738-4-RR



Basic Information

Catalog Number: 82738-4-RR	GenBank Accession Number: BC140791	Purification Method: Protein A purification
Size: 100ul , Concentration: 500 ug/ml by Nanodrop;	GeneID (NCBI): 7153	CloneNo.: 1J18
Source: Rabbit	UNIPROT ID: P11388	Recommended Dilutions: WB 1:2000-1:10000
Isotype: IgG	Full Name: topoisomerase (DNA) II alpha 170kDa	IP 0.5-4.0 ug for 1.0-3.0 mg of total protein lysate
Immunogen Catalog Number: AG19551	Calculated MW: 1531 aa, 174 kDa	IF/ICC 1:250-1:1000
	Observed MW: ~170 kDa	

Applications

Tested Applications: WB, IF/ICC, IP, ELISA	Positive Controls:
Species Specificity: human	WB : K-562 cells, HeLa cells, HEK-293 cells, A431 cells, Jurkat cells
	IP : HeLa cells,
	IF/ICC : A431 cells,

Background Information

TOP2A, also named as TOP2, belongs to the type II topoisomerase family. Topoisomerase II makes double-strand breaks. TOP2 control the topological states of DNA by transient breakage and subsequent rejoining of DNA strands. TOP2A may play a role in regulating the period length of ARNTL/BMAL1 transcriptional oscillation. DNA topoisomerase IIa (170 kDa, TOP2a/170) is essential in proliferating cells by resolving DNA topological entanglements during chromosome condensation, replication, and segregation.

Storage

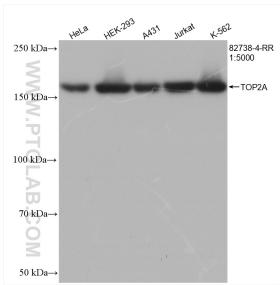
Storage:
Store at -20°C. Stable for one year after shipment.
Storage Buffer:
PBS with 0.02% sodium azide and 50% glycerol pH 7.3.
Aliquoting is unnecessary for -20°C storage

*** 20ul sizes contain 0.1% BSA

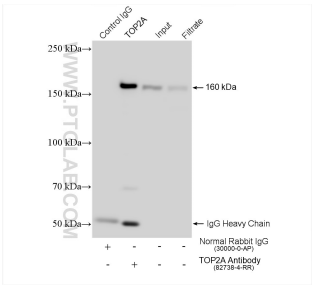
For technical support and original validation data for this product please contact:
T: 1 (888) 4PTGLAB (1-888-478-4522) (toll free in USA), or 1(312) 455-8498 (outside USA)
E: proteintech@ptglab.com
W: ptglab.com

This product is exclusively available under Proteintech Group brand and is not available to purchase from any other manufacturer.

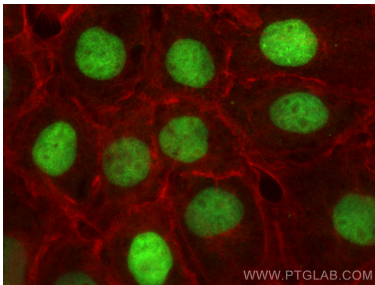
Selected Validation Data



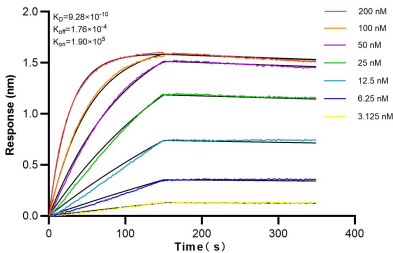
Various lysates were subjected to SDS PAGE followed by western blot with 82738-4-RR (TOP2A antibody) at dilution of 1:5000 incubated at room temperature for 1.5 hours.



IP result of anti-TOP2A (IP:82738-4-RR, 4ug; Detection:82738-4-RR 1:2000) with HeLa cells lysate 1280 ug.



Immunofluorescent analysis of (4% PFA) fixed A431 cells using TOP2A antibody (82738-4-RR, Clone: 1J18) at dilution of 1:500 and CoraLite®488-Conjugated AffiniPure Goat Anti-Rabbit IgG(H+L) (SA00013-2), CoraLite®594-Phalloidin (red).



Biolayer interferometry (BLI) kinetic assays of 82738-4-RR against Human TOP2A were performed. The affinity constant is 0.928 nM.