

For Research Use Only

CHCHD3 Recombinant antibody

Catalog Number: 82743-1-RR

Featured Product



Basic Information

Catalog Number:

82743-1-RR

Size:

100ul, Concentration: 500 ug/ml by Nanodrop;

Source:

Rabbit

Isotype:

IgG

Immunogen Catalog Number:

AG22579

GenBank Accession Number:

BC014839

GeneID (NCBI):

54927

UNIPROT ID:

Q9NX63

Full Name:

coiled-coil-helix-coiled-coil-helix domain containing 3

Calculated MW:

227 aa, 26 kDa

Observed MW:

26 kDa

Purification Method:

Protein A purification

CloneNo.:

4B11

Recommended Dilutions:

WB 1:2000-1:10000

IP 0.5-4.0 ug for 1.0-3.0 mg of total protein lysate

IF/ICC 1:250-1:1000

Applications

Tested Applications:

WB, IF/ICC, IP, ELISA

Species Specificity:

human, mouse

Positive Controls:

WB : HeLa cells, HEK-293 cells, HepG2 cells, Jurkat cells, NIH/3T3 cells, mouse liver tissue

IP : Jurkat cells,

IF/ICC : HepG2 cells,

Background Information

CHCHD3, initially identified as a substrate for cAMP-dependent protein kinase (PKA), is a ubiquitous protein in the mitochondria and plays a prominent role in maintaining cristae integrity and mitochondrial function. In mitochondria, ChChd3 is predominantly localized to the inner membrane (IM), facing toward the intermembrane space (IMS), and is part of the large protein complex now called as MINOS (mitochondrial inner membrane organizing system), or MIB (mitochondrial intermembrane space bridging). CHCHD3 is highly conserved in mammals with human and mouse protein sharing 92% sequence similarity.

Storage

Storage:

Store at -20°C. Stable for one year after shipment.

Storage Buffer:

PBS with 0.02% sodium azide and 50% glycerol pH 7.3.

Aliquoting is unnecessary for -20°C storage

*** 20ul sizes contain 0.1% BSA

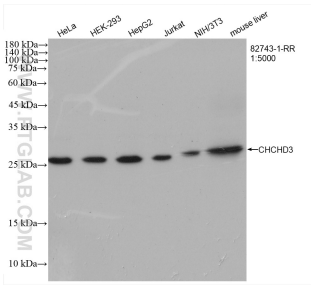
For technical support and original validation data for this product please contact:

T: 1 (888) 4PTGLAB (1-888-478-4522) (toll free in USA), or 1(312) 455-8498 (outside USA)

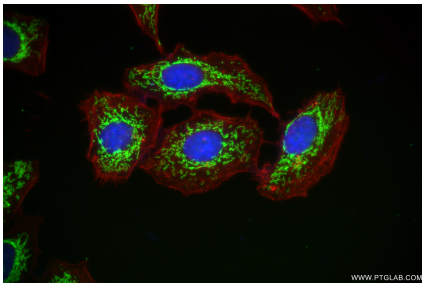
E: proteintech@ptglab.com
W: ptglab.com

This product is exclusively available under Proteintech Group brand and is not available to purchase from any other manufacturer.

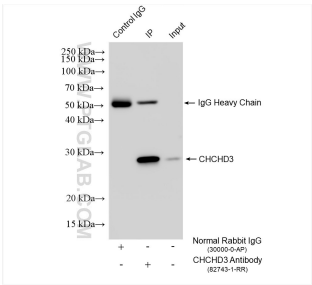
Selected Validation Data



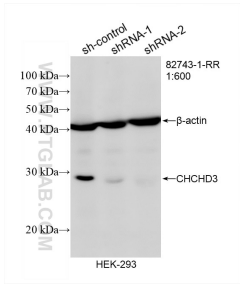
Various lysates were subjected to SDS PAGE followed by western blot with 82743-1-RR (CHCHD3 antibody) at dilution of 1:5000 incubated at room temperature for 1.5 hours.



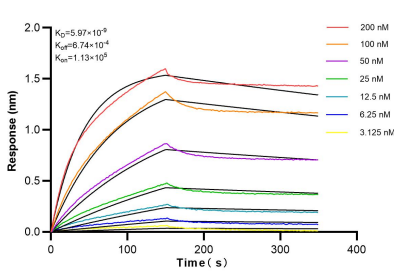
Immunofluorescent analysis of (4% PFA) fixed HepG2 cells using CHCHD3 antibody (82743-1-RR, Clone: 4B11) at dilution of 1:500 and CoraLite® 488-Conjugated Goat Anti-Rabbit IgG(H+L) (SA00013-2), CL594-Phalloidin (red).



IP result of anti-CHCHD3 (IP:82743-1-RR, 4ug; Detection:82743-1-RR 1:1000) with Jurkat cells lysate 1600 ug.



WB result of CHCHD3 antibody (82743-1-RR; 1:600; incubated at room temperature for 1.5 hours) with sh-Control and sh-CHCHD3 transfected HEK-293 cells.



Biolayer interferometry (BLI) kinetic assays of 82743-1-RR against Human CHCHD3 were performed. The affinity constant is 5.97 nM.