

For Research Use Only

IGF2BP2 Recombinant antibody

Catalog Number: 82757-2-RR



Basic Information

Catalog Number: 82757-2-RR	GenBank Accession Number: BC021290	Purification Method: Protein A purification
Size: 100ul , Concentration: 500 ug/ml by Nanodrop;	GeneID (NCBI): 10644	CloneNo.: 6L8
Source: Rabbit	UNIPROT ID: Q9Y6M1	Recommended Dilutions: WB 1:2000-1:10000 IP 0.5-4.0 ug for 1.0-3.0 mg of total protein lysate IHC 1:500-1:2000
Isotype: IgG	Full Name: insulin-like growth factor 2 mRNA binding protein 2	
Immunogen Catalog Number: AG2142	Calculated MW: 65 kDa	
	Observed MW: 55-65 kDa	

Applications

Tested Applications: WB, IHC, IP, ELISA	Positive Controls:
Species Specificity: human, mouse, rat	WB : HeLa cells, mouse kidney tissue, rat kidney tissue
Note-IHC: suggested antigen retrieval with TE buffer pH 9.0; (*) Alternatively, antigen retrieval may be performed with citrate buffer pH 6.0	IP : HEK-293 cells,
	IHC : mouse kidney tissue, human pancreas cancer tissue

Background Information

Insulin-like growth factor 2 mRNA-binding protein 2(IGF2BP2), is a member of a family of mRNA binding protein, which can bind to several mammalian cells' mRNAs. Thus it may involve in the regulation of translation of mRNA. IGF2BP2's polymorphisms is risk factor for developing type 2 diabetes. This antibody raise against part of N-terminus of human IGF2BP2. IGF2BP2 has some isoforms with the MW of 54-66 kDa. Some literature has reported that multiple bands can be detected (PMID: 22427968, 36322753, 23069990).

Storage

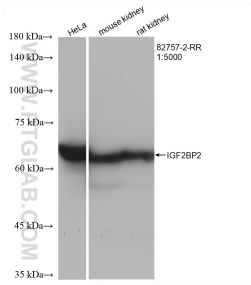
Storage:
Store at -20°C. Stable for one year after shipment.
Storage Buffer:
PBS with 0.02% sodium azide and 50% glycerol pH 7.3.
Aliquoting is unnecessary for -20°C storage

*** 20ul sizes contain 0.1% BSA

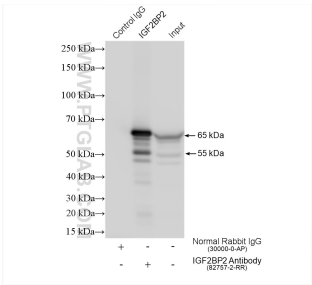
For technical support and original validation data for this product please contact:
T: 1 (888) 4PTGLAB (1-888-478-4522) (toll free in USA), or 1(312) 455-8498 (outside USA)
E: proteintech@ptglab.com
W: ptglab.com

This product is exclusively available under Proteintech Group brand and is not available to purchase from any other manufacturer.

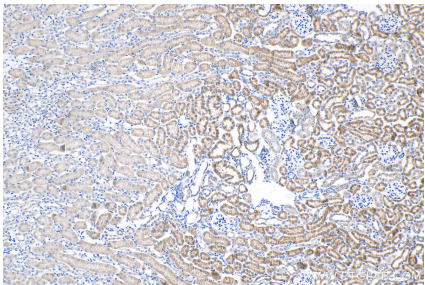
Selected Validation Data



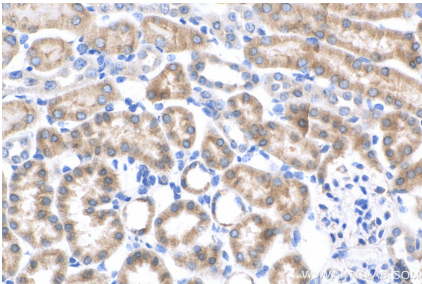
Various lysates were subjected to SDS PAGE followed by western blot with 82757-2-RR (IGF2BP2 antibody) at dilution of 1:5000 incubated at room temperature for 1.5 hours.



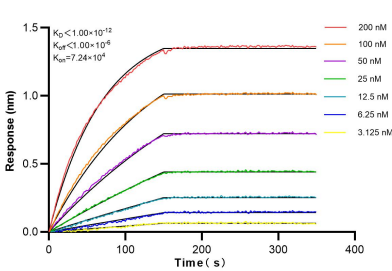
IP result of anti-IGF2BP2 (IP:82757-2-RR, 4ug; Detection:82757-2-RR 1:4000) with HEK-293 cells lysate 1480 ug.



Immunohistochemical analysis of paraffin-embedded mouse kidney tissue slide using 82757-2-RR (IGF2BP2 antibody) at dilution of 1:1000 (under 10x lens). Heat mediated antigen retrieval with Tris-EDTA buffer (pH 9.0).



Immunohistochemical analysis of paraffin-embedded mouse kidney tissue slide using 82757-2-RR (IGF2BP2 antibody) at dilution of 1:1000 (under 40x lens). Heat mediated antigen retrieval with Tris-EDTA buffer (pH 9.0).



Biolayer interferometry (BLI) kinetic assays of 82757-2-RR against Human IGF2BP2 were performed. The affinity constant is below 1 pM.