

For Research Use Only

# Phospho-HER2/ErbB2 (Tyr877) Recombinant monoclonal antibody, PBS Only

Catalog Number: 82762-11-PBS



## Basic Information

<b>Catalog Number:</b> 82762-11-PBS	<b>GenBank Accession Number:</b> BC156755	<b>Purification Method:</b> Protein A purification
<b>Size:</b> 100ug , Concentration: 1 mg/ml by Nanodrop;	<b>GeneID (NCBI):</b> 2064	<b>CloneNo.:</b> 250539F5
<b>Source:</b> Rabbit	<b>UNIPROT ID:</b> P04626	
<b>Isotype:</b> IgG	<b>Full Name:</b> v-erb-b2 erythroblastic leukemia viral oncogene homolog 2, neuro/glioblastoma derived oncogene homolog (avian)	
	<b>Calculated MW:</b> 1255 aa, 138 kDa	
	<b>Observed MW:</b> 185 kDa	

## Applications

**Tested Applications:**  
WB, IF/ICC, FC (Intra), Indirect ELISA

**Species Specificity:**  
human

## Background Information

HER2, also known as ErbB2 and Neu, is a 185-kDa transmembrane glycoprotein that is a member of the epidermal growth factor (EGF) receptor family of receptor tyrosine kinases. Phospho-HER2/ErbB2 (Tyr877) refers to the phosphorylated form of the human epidermal growth-factor receptor 2 (HER2, ErbB2) at tyrosine 877 within its kinase domain. This phosphorylation event is catalyzed in trans by dimerization-activated HER2 itself or by Src-family kinases (SFKs) upon receptor clustering, and serves as a critical activation switch for downstream signaling cascades. ( PMID: 34107301)

## Storage

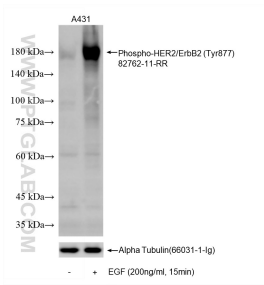
**Storage:**  
Store at -80°C.

**Storage Buffer:**  
PBS only, pH7.3

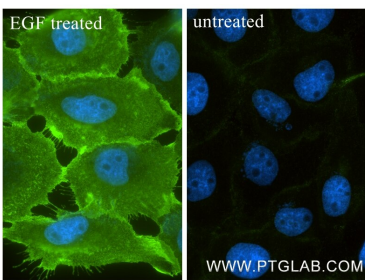
For technical support and original validation data for this product please contact:  
T: 1 (888) 4PTGLAB (1-888-478-4522) (toll free in USA), or 1(312) 455-8498 (outside USA)  
E: [proteintech@ptglab.com](mailto:proteintech@ptglab.com)  
W: [ptglab.com](http://ptglab.com)

This product is exclusively available under Proteintech Group brand and is not available to purchase from any other manufacturer.

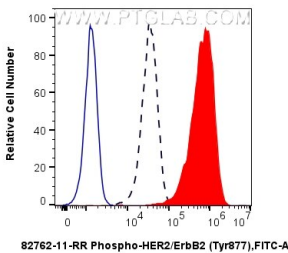
Selected Validation Data



Non-treated A431 cells and EGF (HZ-1326) treated A431 cells were subjected to SDS PAGE followed by western blot with 82762-11-RR (Phospho-HER2/ErbB2 (Tyr877) antibody) at dilution of 1:2000 incubated at room temperature for 1.5 hours. The membrane was stripped and re-blotted with Alpha Tubulin (66031-1-Ig) antibody as a loading control. This data was developed using the same antibody clone with 82762-11-PBS in a different storage buffer



Immunofluorescent analysis of (4% PFA) fixed EGF treated A431 cells using Phospho-HER2/ErbB2 (Tyr877) antibody (82762-11-RR, Clone: 250539F5 ) at dilution of 1:1000 and CoraLite®488-Conjugated Goat Anti-Rabbit IgG(H+L) (SA00013-2). This data was developed using the same antibody clone with 82762-11-PBS in a different storage buffer formulation.



1X10<sup>6</sup> A431 cells untreated (dashed lines) or treated with EGF which intracellularly stained with 0.25 ug Phospho-HER2/ErbB2 (Tyr877) Recombinant monoclonal antibody (82762-11-RR, Clone:250539F5) and CoraLite®488-Conjugated Goat Anti-Rabbit IgG(H+L) (SA00013-2)(red), or 0.25 ug Rabbit IgG Isotype Control RecAb (98136-1-RR, Clone: 240953C9) (blue). Cells were fixed and permeabilized with Flow Cytometry Phosphorylated Protein