

For Research Use Only

TTL Recombinant antibody

Catalog Number: 82763-5-RR

Featured Product



Basic Information

Catalog Number:

82763-5-RR

Size:

100ul, Concentration: 800 ug/ml by Nanodrop;

Source:

Rabbit

Isotype:

IgG

Immunogen Catalog Number:

AG4526

GenBank Accession Number:

BC036819

GeneID (NCBI):

150465

UNIPROT ID:

Q8NG68

Full Name:

tubulin tyrosine ligase

Calculated MW:

377 aa, 43 kDa

Observed MW:

43 kDa

Purification Method:

Protein A purification

CloneNo.:

3P9

Recommended Dilutions:

WB 1:2000-1:16000

Applications

Tested Applications:

WB, ELISA

Species Specificity:

human, mouse, rat

Positive Controls:

WB : HeLa cells, SH-SY5Y cells, U2OS cells, Y79 cells, Jurkat cells, mouse brain tissue, rat brain tissue

Background Information

Tubulin-tyrosine ligase (TTL) is the enzyme responsible for the reversible addition of a tyrosine residue at the carboxyl end of alpha-tubulin. TTL forms stable complexes with tubulin and inhibit tubulin polymerization. TTL is frequently suppressed during tumor progression with resulting accumulation of deetyrosinated alpha-tubulin in tumor cells. TTL suppression in human cancers is associated with increased tumor aggressiveness.

Storage

Storage:

Store at -20°C. Stable for one year after shipment.

Storage Buffer:

PBS with 0.02% sodium azide and 50% glycerol pH 7.3.

Aliquoting is unnecessary for -20°C storage

*** 20ul sizes contain 0.1% BSA

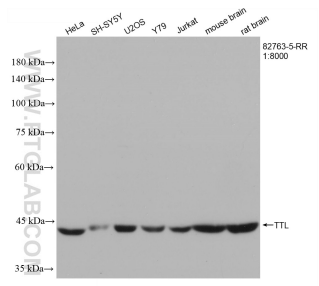
For technical support and original validation data for this product please contact:

T: 1 (888) 4PTGLAB (1-888-478-4522) (toll free in USA), or 1(312) 455-8498 (outside USA)

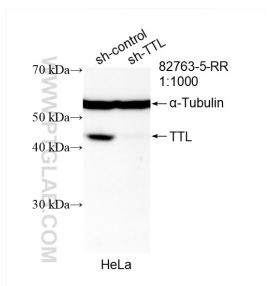
E: proteintech@ptglab.com
W: ptglab.com

This product is exclusively available under Proteintech Group brand and is not available to purchase from any other manufacturer.

Selected Validation Data



Various lysates were subjected to SDS PAGE followed by western blot with 82763-5-RR (TTL antibody) at dilution of 1:8000 incubated at room temperature for 1.5 hours.



WB result of TTL antibody (82763-5-RR; 1:1000; incubated at room temperature for 1.5 hours) with sh-Control and sh-TTL transfected HeLa cells.