

For Research Use Only

IL-22 Recombinant antibody, PBS Only

Catalog Number: 82766-15-PBS



Basic Information

Catalog Number: 82766-15-PBS	GenBank Accession Number: BC066263	Purification Method: Protein A purification
Size: 100ug , Concentration: 1 mg/ml by Nanodrop;	GeneID (NCBI): 50616	CloneNo.: 250428B5
Source: Rabbit	UNIPROT ID: Q9GZX6	
Isotype: IgG	Full Name: interleukin 22	
Immunogen Catalog Number: HZ-1325	Observed MW: 20 kDa	

Applications

Tested Applications:
WB, Indirect ELISA

Species Specificity:
human

Background Information

Interleukin-22 (IL-22) is a member of the IL-10 cytokine family, primarily produced by immune cells such as group 3 innate lymphoid cells (ILC3s), Th17 cells, Th22 cells, and $\gamma\delta$ T cells (PMID: 25706098). Its unique feature lies in targeting non-immune epithelial and stromal cells, which exclusively express the heterodimeric IL-22 receptor (IL-22R1 and IL-10R2). IL-22 plays a dual role in immunity and tissue homeostasis: it promotes epithelial cell proliferation, regeneration, and barrier integrity through the upregulation of antimicrobial peptides (e.g., defensins) and mucin production, thereby enhancing defense against extracellular pathogens. However, IL-22 can also drive pathological inflammation in autoimmune and chronic inflammatory diseases (e.g., psoriasis, colitis) when dysregulated. This functional dichotomy highlights its context-dependent nature as both a protective mediator and a pathogenic effector (PMID: 20498020).

Storage

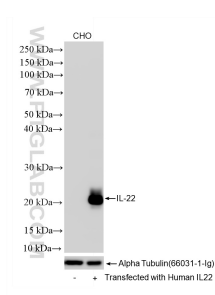
Storage:
Store at -80°C.

Storage Buffer:
PBS only, pH7.3

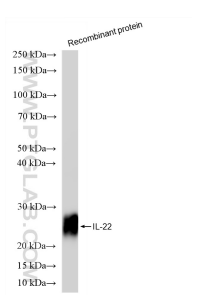
For technical support and original validation data for this product please contact:
T: 1 (888) 4PTGLAB (1-888-478-4522) (toll free in USA), or 1(312) 455-8498 (outside USA)
E: proteintech@ptglab.com
W: ptglab.com

This product is exclusively available under Proteintech Group brand and is not available to purchase from any other manufacturer.

Selected Validation Data



Various lysates were subjected to SDS PAGE followed by western blot with 82766-15-RR (IL22 antibody) at dilution of 1:5000 incubated at room temperature for 1.5 hours. This data was developed using the same antibody clone with 82766-15-PBS in a different storage buffer formulation.



Recombinant protein were subjected to SDS PAGE followed by western blot with 82766-15-RR (IL22 antibody) at dilution of 1:5000 incubated at room temperature for 1.5 hours. This data was developed using the same antibody clone with 82766-15-PBS in a different storage buffer formulation.