

For Research Use Only

RNASEH1 Recombinant antibody

Catalog Number: 82771-1-RR

Featured Product



Basic Information

Catalog Number:	82771-1-RR	GenBank Accession Number:	BC002973	Purification Method:	Protein A purification
Size:	100ul , Concentration: 1000 ug/ml by Nanodrop;	GeneID (NCBI):	246243	CloneNo.:	2C12
Source:	Rabbit	UNIPROT ID:	O60930	Recommended Dilutions:	WB 1:5000-1:50000 IHC 1:1500-1:6000
Isotype:	IgG	Full Name:	ribonuclease H1		
Immunogen Catalog Number:	AG7990	Calculated MW:	32 kDa		
		Observed MW:	32 kDa		

Applications

Tested Applications:
WB, IHC, ELISA

Species Specificity:
human

Note-IHC: suggested antigen retrieval with TE buffer pH 9.0; (*) Alternatively, antigen retrieval may be performed with citrate buffer pH 6.0

Positive Controls:

WB : HeLa cells, A549 cells, HEK-293 cells, U2OS cells, Jurkat cells

IHC : human ovarian cancer,

Background Information

Ribonucleases H are enzymes that cleave the RNA of RNA/DNA hybrids that form during replication and repair and which could lead to DNA instability if they were not processed. Eukaryotic RNases H are larger and more complex than their prokaryotic counterparts [PMID:12667461]. Eukaryotic RNase H1 has acquired a Hybrid Binding Domain that confers processivity and affinity for the substrate. Because of its essential role and its similarities in structure and enzymatic mechanism to the RNase H of HIV reverse transcriptase, RNASEH1 has been implicated in mitochondrial DNA replication during mouse development [PMID:19228196].

Storage

Storage:

Store at -20°C. Stable for one year after shipment.

Storage Buffer:

PBS with 0.02% sodium azide and 50% glycerol pH 7.3.

Aliquoting is unnecessary for -20°C storage

*** 20ul sizes contain 0.1% BSA

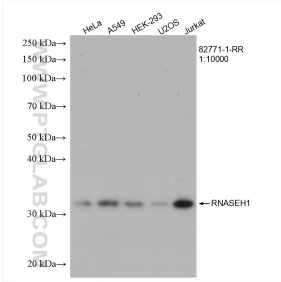
For technical support and original validation data for this product please contact:

T: 1 (888) 4PTGLAB (1-888-478-4522) (toll free in USA), or 1(312) 455-8498 (outside USA)

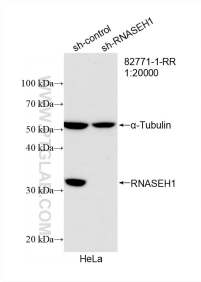
E: proteintech@ptglab.com
W: ptglab.com

This product is exclusively available under Proteintech Group brand and is not available to purchase from any other manufacturer.

Selected Validation Data



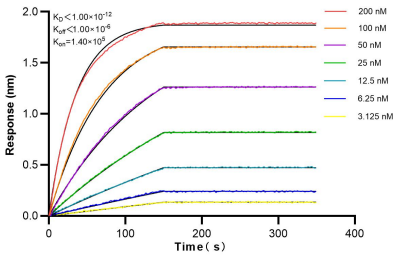
Various lysates were subjected to SDS PAGE followed by western blot with 82771-1-RR (RNASEH1 antibody) at dilution of 1:10000 incubated at room temperature for 1.5 hours.



WB result of RNASEH1 antibody (82771-1-RR; 1:20000; incubated at room temperature for 1.5 hours) with sh-Control and sh-RNASEH1 transfected HeLa cells.



Immunohistochemical analysis of paraffin-embedded human ovarian cancer slide using 82771-1-RR (RNASEH1 antibody) at dilution of 1:3000 (under 20x lens). Heat mediated antigen retrieval with Tris-EDTA buffer (pH 9.0).



Biolayer interferometry (BLI) kinetic assays of 82771-1-RR against Human RNASEH1 were performed. The affinity constant is below 1 pM.