

For Research Use Only

# OGDH Recombinant antibody, PBS Only

Catalog Number: 82773-1-PBS

Featured Product



## Basic Information

Catalog Number:

82773-1-PBS

Size:

100ug, Concentration: 1mg/ml by Nanodrop;

Source:

Rabbit

Isotype:

IgG

Immunogen Catalog Number:

AG7368

GenBank Accession Number:

BC004964

GeneID (NCBI):

4967

UNIPROT ID:

Q02218

Full Name:

oxoglutarate (alpha-ketoglutarate) dehydrogenase (lipoamide)

Calculated MW:

116 kDa

Observed MW:

116 kDa

Purification Method:

Protein A purification

CloneNo.:

1C16

## Applications

Tested Applications:

WB, IHC, IF-P, Indirect ELISA

Species Specificity:

human, mouse, rat

## Background Information

OGDH(2-oxoglutarate dehydrogenase, mitochondrial) is also named as OGDC-E1 and belongs to the alpha-ketoglutarate dehydrogenase family. It is one of the three enzymatic components of 2-oxoglutarate dehydrogenase complex, which catalyzes the overall conversion of 2-oxoglutarate to succinyl-CoA and CO<sub>2</sub>. This protein has 3 isoforms produced by alternative splicing. This antibody is immunized with the C-terminal and can recognize the isoform 1 and 2 with the MW of 116 kDa.

## Storage

Storage:

Store at -80°C.

Storage Buffer:

PBS only, pH7.3

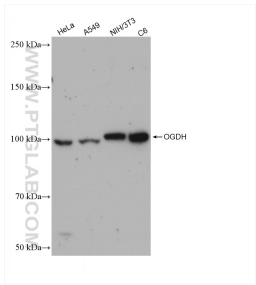
For technical support and original validation data for this product please contact:

T: 1 (888) 4PTGLAB (1-888-478-4522) (toll free in USA), or 1(312) 455-8498 (outside USA)

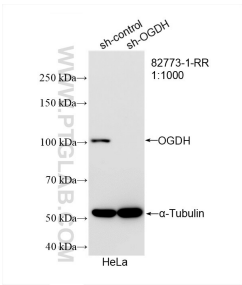
E: [proteintech@ptglab.com](mailto:proteintech@ptglab.com)  
W: [ptglab.com](http://ptglab.com)

This product is exclusively available under Proteintech Group brand and is not available to purchase from any other manufacturer.

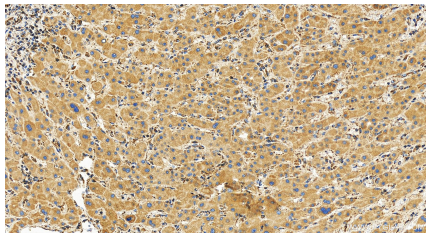
Selected Validation Data



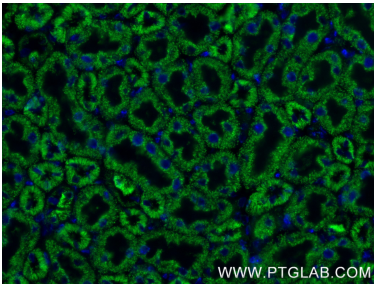
Various lysates were subjected to SDS PAGE followed by western blot with 82773-1-RR (OGDH antibody) at dilution of 1:7290 incubated at room temperature for 1.5 hours. This data was developed using the same antibody clone with 82773-1-PBS in a different storage buffer formulation.



WB result of OGDH antibody (82773-1-RR; 1:1000; incubated at room temperature for 1.5 hours) with sh-Control and sh-OGDH transfected HeLa cells. This data was developed using the same antibody clone with 82773-1-PBS in a different storage buffer formulation.



Immunohistochemical analysis of paraffin-embedded human intrahepatic cholangiocarcinoma tissue slide using 82773-1-RR (OGDH antibody) at dilution of 1:400 (under 20x lens). Heat mediated antigen retrieval with Tris-EDTA buffer (pH 9.0). This data was developed using the same antibody clone with 82773-1-PBS in a different storage buffer formulation.



Immunofluorescent analysis of (4% PFA) fixed paraffin-embedded mouse kidney tissue using OGDH antibody (82773-1-RR, Clone: 1C16) at dilution of 1:200 and Coralite®488-Conjugated Goat Anti-Rabbit IgG(H+L) (SA00013-2). Heat mediated antigen retrieval with Tris-EDTA buffer (pH 9.0). This data was developed using the same antibody clone with 82773-1-PBS in a different storage buffer formulation.