

For Research Use Only

# Beta Arrestin 2 Recombinant antibody, PBS Only (Capture/Detector)

Catalog Number: 82780-4-PBS



## Basic Information

<b>Catalog Number:</b> 82780-4-PBS	<b>GenBank Accession Number:</b> BC007427	<b>Purification Method:</b> Protein A purification
<b>Size:</b> 100ug , Concentration: 1 mg/ml by Nanodrop;	<b>GeneID (NCBI):</b> 409	<b>CloneNo.:</b> 241470C1
<b>Source:</b> Rabbit	<b>UNIPROT ID:</b> P32121	
<b>Isotype:</b> IgG	<b>Full Name:</b> arrestin, beta 2	
<b>Immunogen Catalog Number:</b> AG0227	<b>Calculated MW:</b> 46 kDa	

## Applications

**Tested Applications:**  
Cytometric bead array, Sandwich ELISA, Indirect ELISA,  
Sample test

**Species Specificity:**  
human

## Product Information

82780-4-PBS targets Beta Arrestin 2 as part of a matched antibody pair:

MP01125-1: 82780-4-PBS capture and 82780-3-PBS detection (validated in Cytometric bead array)

MP01125-2: 82780-4-PBS capture and 82780-2-PBS detection (validated in Cytometric bead array)

MP01125-4: 82780-7-PBS capture and 82780-4-PBS detection (validated in Sandwich ELISA)

Unconjugated rabbit recombinant monoclonal antibody in PBS only (BSA and azide free) storage buffer at a concentration of 1 mg/mL, ready for conjugation. Created using Proteintech's proprietary in-house recombinant technology. Recombinant production enables unrivalled batch-to-batch consistency, easy scale-up, and future security of supply.

This conjugation ready format makes antibodies ideal for use in many applications including: ELISAs, multiplex assays requiring matched pairs, mass cytometry, and multiplex imaging applications. Antibody use should be optimized by the end user for each application and assay.

## Storage

**Storage:**  
Store at -80°C.

**Storage Buffer:**  
PBS only, pH7.3

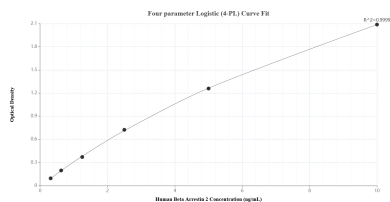
For technical support and original validation data for this product please contact:

T: 1 (888) 4PTGLAB (1-888-478-4522) (toll free  
in USA), or 1(312) 455-8498 (outside USA)

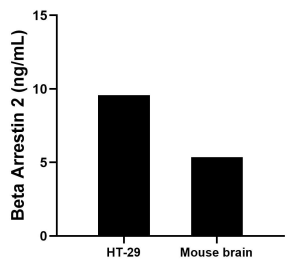
E: [proteintech@ptglab.com](mailto:proteintech@ptglab.com)  
W: [ptglab.com](http://ptglab.com)

This product is exclusively available under Proteintech Group brand and is not available to purchase from any other manufacturer.

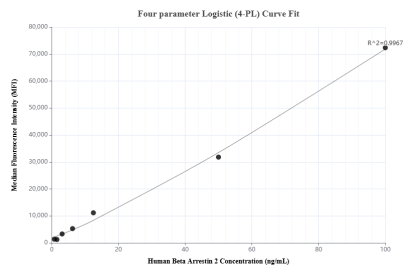
## Selected Validation Data



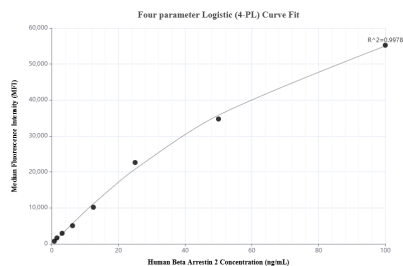
Sandwich ELISA standard curve of MP01125-4, Human Beta Arrestin 2 Recombinant Matched Antibody Pair - PBS only. 82780-7-PBS was coated to a plate as the capture antibody and incubated with serial dilutions of standard Ag0227. 82780-4-PBS was HRP conjugated as the detection antibody. Range: 0.313-10 ng/mL



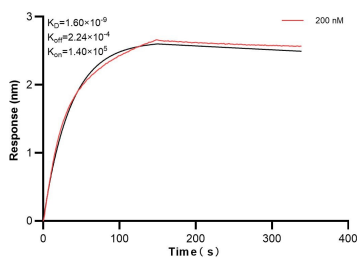
The mean Beta Arrestin 2 concentration was determined to be 9.58 ng/mL in HT-29 cell extract based on a 1.30 mg/mL extract load and 5.35 ng/mL in mouse brain tissue extract based on a 2.00 mg/mL extract load.



Cytometric bead array standard curve of MP01125-1, Beta Arrestin 2 Recombinant Matched Antibody Pair, PBS Only. Capture antibody: 82780-4-PBS. Detection antibody: 82780-3-PBS. Standard: Ag0227. Range: 0.781-100 ng/mL



Cytometric bead array standard curve of MP01125-2, Beta Arrestin 2 Recombinant Matched Antibody Pair, PBS Only. Capture antibody: 82780-4-PBS. Detection antibody: 82780-2-PBS. Standard: Ag0227. Range: 0.781-100 ng/mL



Biolayer interferometry (BLI) kinetic assay of 82780-4-PBS against Human Beta Arrestin 2 was performed. The affinity constant is 1.60 nM.