

For Research Use Only

CD55 Recombinant antibody, PBS Only (Capture)

Catalog Number: 82781-9-PBS



Basic Information

Catalog Number: 82781-9-PBS	GenBank Accession Number: BC001288	Purification Method: Protein A purification
Size: 100ug , Concentration: 1 mg/ml by Nanodrop;	GeneID (NCBI): 1604	CloneNo.: 250682C11
Source: Rabbit	UNIPROT ID: P08174	
Isotype: IgG	Full Name: CD55 molecule, decay accelerating factor for complement (Cromer blood group)	
Immunogen Catalog Number: EG4246	Calculated MW: 41 kDa	

Applications

Tested Applications:
Cytometric bead array, Indirect ELISA, Sample test

Species Specificity:
human

Product Information

82781-9-PBS targets CD55 as part of a matched antibody pair:

MP02253-1: 82781-9-PBS capture and 82781-8-PBS detection (validated in Cytometric bead array)

Unconjugated rabbit recombinant monoclonal antibody in PBS only (BSA and azide free) storage buffer at a concentration of 1 mg/mL, ready for conjugation. Created using Proteintech's proprietary in-house recombinant technology. Recombinant production enables unrivalled batch-to-batch consistency, easy scale-up, and future security of supply.

This conjugation ready format makes antibodies ideal for use in many applications including: ELISAs, multiplex assays requiring matched pairs, mass cytometry, and multiplex imaging applications. Antibody use should be optimized by the end user for each application and assay.

Storage

Storage:
Store at -80°C.

Storage Buffer:
PBS only, pH7.3

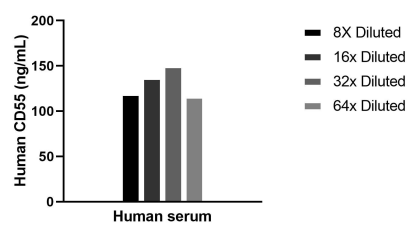
For technical support and original validation data for this product please contact:

T: 1 (888) 4PTGLAB (1-888-478-4522) (toll free in USA), or 1(312) 455-8498 (outside USA)

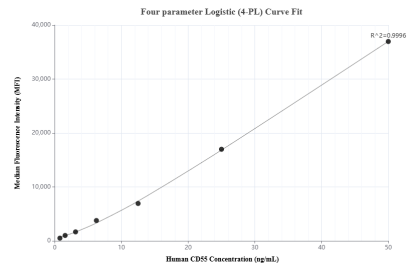
E: proteintech@ptglab.com
W: ptglab.com

This product is exclusively available under Proteintech Group brand and is not available to purchase from any other manufacturer.

Selected Validation Data



The mean CD55 concentration was determined to be 130.1 ng/mL in human serum.



Cytometric bead array standard curve of MP02253-1, CD55 Recombinant Matched Antibody Pair, PBS Only. Capture antibody: 82781-9-PBS. Detection antibody: 82781-8-PBS. Standard: Eg4246. Range: 0.781-50 ng/mL.