

For Research Use Only

CPEB1 Recombinant antibody, PBS Only

Catalog Number: 82785-1-PBS



Basic Information

Catalog Number: 82785-1-PBS	GenBank Accession Number: BC035348	Purification Method: Protein A purification
Size: 100ug, Concentration: 1mg/ml by Nanodrop;	GeneID (NCBI): 64506	CloneNo.: 6I9
Source: Rabbit	UNIPROT ID: Q9BZB8	
Isotype: IgG	Full Name: cytoplasmic polyadenylation element binding protein 1	
Immunogen Catalog Number: AG3994	Calculated MW: 486 aa, 54 kDa	
	Observed MW: 63 kDa	

Applications

Tested Applications:
IF/ICC, Indirect ELISA

Species Specificity:
human

Background Information

CPEB1, also named as CEBP, CPEB and CPE-BP1, contains two RRM (RNA recognition motif) domains and belongs to the RRM CPEB family. It is a sequence-specific RNA-binding protein that regulates mRNA cytoplasmic polyadenylation and translation initiation during oocyte maturation, early development and at postsynapse sites of neurons. CPEB1 regulated translation is a key process involved in INS signaling.

Storage

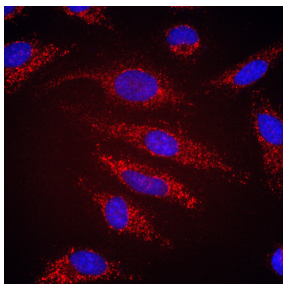
Storage:
Store at -80°C.

Storage Buffer:
PBS Only

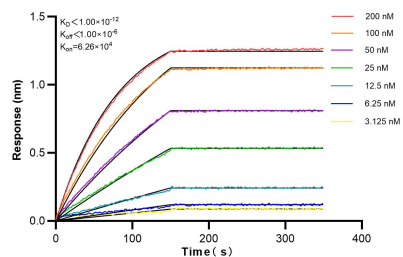
For technical support and original validation data for this product please contact:
T: 1 (888) 4PTGLAB (1-888-478-4522) (toll free in USA), or 1(312) 455-8498 (outside USA)
E: proteintech@ptglab.com
W: ptglab.com

This product is exclusively available under Proteintech Group brand and is not available to purchase from any other manufacturer.

Selected Validation Data



Immunofluorescent analysis of (-20°C Ethanol) fixed HeLa cells using CPEB1 antibody (82785-1-RR, Clone: 6I9) at dilution of 1:400 and Multi-rAb CoraLite® Plus 594-Goat Anti-Rabbit Recombinant Secondary Antibody (H+L) (RGAR004). This data was developed using the same antibody clone with 82785-1-PBS in a different storage buffer formulation.



Biolayer interferometry (BLI) kinetic assays of 82785-1-RR against Human CPEB1 were performed. The affinity constant is below 1 pM.