

For Research Use Only

# CPEB1 Recombinant antibody

Catalog Number: 82785-1-RR



## Basic Information

<b>Catalog Number:</b> 82785-1-RR	<b>GenBank Accession Number:</b> BC035348	<b>Purification Method:</b> Protein A purification
<b>Size:</b> 100ul , Concentration: 400 µg/ml by Nanodrop;	<b>GeneID (NCBI):</b> 64506	<b>CloneNo.:</b> 6J9
<b>Source:</b> Rabbit	<b>Full Name:</b> cytoplasmic polyadenylation element binding protein 1	<b>Recommended Dilutions:</b> IF 1:200-1:800
<b>Isotype:</b> IgG	<b>Calculated MW:</b> 486 aa, 54 kDa	
<b>Immunogen Catalog Number:</b> AG3994	<b>Observed MW:</b> 63 kDa	

## Applications

<b>Tested Applications:</b> IF, ELISA	<b>Positive Controls:</b> IF : HeLa cells,
<b>Species Specificity:</b> Human	

## Background Information

CPEB1, also named as CEBP, CPEB and CPE-BP1, contains two RRM (RNA recognition motif) domains and belongs to the RRM CPEB family. It is a sequence-specific RNA-binding protein that regulates mRNA cytoplasmic polyadenylation and translation initiation during oocyte maturation, early development and at postsynapse sites of neurons. CPEB1 regulated translation is a key process involved in INS signaling.

## Storage

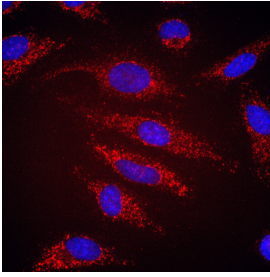
**Storage:**  
Store at -20°C. Stable for one year after shipment.  
**Storage Buffer:**  
PBS with 0.02% sodium azide and 50% glycerol pH 7.3.  
Aliquoting is unnecessary for -20°C storage

\*\*\* 20ul sizes contain 0.1% BSA

For technical support and original validation data for this product please contact:  
T: 1 (888) 4PTGLAB (1-888-478-4522) (toll free in USA), or 1(312) 455-8498 (outside USA)      E: proteintech@ptglab.com  
W: ptglab.com

This product is exclusively available under Proteintech Group brand and is not available to purchase from any other manufacturer.

## Selected Validation Data



Immunofluorescent analysis of (-20°C Ethanol) fixed HeLa cells using CPEB1 antibody (82785-1-RR, Clone: 6I9) at dilution of 1:400 and Multi-rAb CoraLite® Plus 594-Goat Anti-Rabbit Recombinant Secondary Antibody (H+L) (RGAR004).