

For Research Use Only

ENPP-2/Autotaxin Recombinant monoclonal antibody, PBS Only (Capture)

Catalog Number: 82789-10-PBS



Basic Information

Catalog Number: 82789-10-PBS	GenBank Accession Number: NM_001040092.3	Purification Method: Protein A purification
Size: 100ug , Concentration: 1 mg/ml by Nanodrop;	GeneID (NCBI): 5168	CloneNo.: 252235F1
Source: Rabbit	UNIPROT ID: Q13822-1	
Isotype: IgG	Full Name: ectonucleotide pyrophosphatase/phosphodiesterase 2	
Immunogen Catalog Number: EG7267	Calculated MW: 99 kDa	

Applications

Tested Applications:
Cytometric bead array, Indirect ELISA

Species Specificity:
human

Product Information

82789-10-PBS targets ENPP-2/Autotaxin as part of a matched antibody pair:

MP02884-1: 82789-10-PBS capture and 82789-9-PBS detection (validated in Cytometric bead array, Sandwich ELISA)

Unconjugated rabbit recombinant monoclonal antibody in PBS only (BSA and azide free) storage buffer at a concentration of 1 mg/mL, ready for conjugation. Created using Proteintech's proprietary in-house recombinant technology. Recombinant production enables unrivalled batch-to-batch consistency, easy scale-up, and future security of supply.

This conjugation ready format makes antibodies ideal for use in many applications including: ELISAs, multiplex assays requiring matched pairs, mass cytometry, and multiplex imaging applications. Antibody use should be optimized by the end user for each application and assay.

Storage

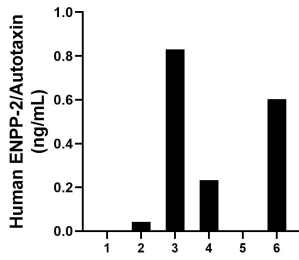
Storage:
Store at -80°C.

Storage Buffer:
PBS only, pH7.3

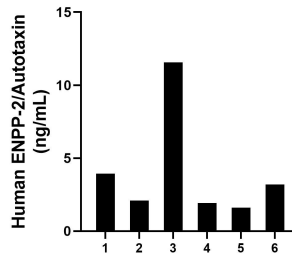
For technical support and original validation data for this product please contact:
T: 1 (888) 4PTGLAB (1-888-478-4522) (toll free in USA), or 1(312) 455-8498 (outside USA) E: proteintech@ptglab.com
W: ptglab.com

This product is exclusively available under Proteintech Group brand and is not available to purchase from any other manufacturer.

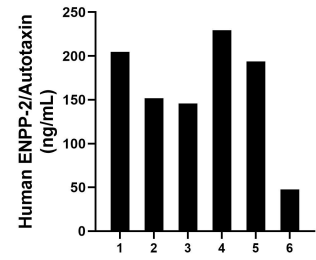
Selected Validation Data



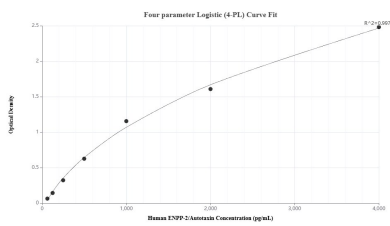
Urine of six individual healthy human donors was measured. The human ENPP-2/Autotaxin concentration of detected samples was determined to be 0.43 ng/mL with a range of 0 - 0.83 ng/mL.



Human milk of six individual healthy human donors was measured. The human ENPP-2/Autotaxin concentration of detected samples was determined to be 4.06 ng/mL with a range of 1.61 - 11.57 ng/mL.



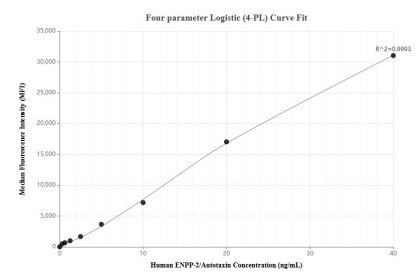
Plasma of six individual healthy human donors was measured. The human ENPP-2/Autotaxin concentration of detected samples was determined to be 162.15 ng/mL with a range of 47.54 - 229.51 ng/mL.



Sandwich ELISA standard curve of MP02884-1, Human ENPP-2/Autotaxin Recombinant Matched Antibody Pair - PBS only. 82789-10-PBS was coated to a plate as the capture antibody and incubated with serial dilutions of standard Eg7267. 82789-9-PBS was HRP conjugated as the detection antibody. Range: 362.5-4000 pg/mL



The mean ENPP-2/Autotaxin concentration was determined to be 325.7 ng/mL in human plasma.



Cytometric bead array standard curve of MP02884-1, ENPP-2/Autotaxin Recombinant Matched Antibody Pair, PBS Only. Capture antibody: 82789-10-PBS. Detection antibody: 82789-9-PBS. Standard: Eg7267. Range: 0.312-40 ng/mL