

# HBS1L Recombinant antibody, PBS Only

Catalog Number: 82795-2-PBS

## Basic Information

<b>Catalog Number:</b> 82795-2-PBS	<b>GenBank Accession Number:</b> BC001465	<b>Purification Method:</b> Protein A purification
<b>Size:</b> 100ug , Concentration: 1mg/ml by Nanodrop;	<b>GeneID (NCBI):</b> 10767	<b>CloneNo.:</b> 2L24
<b>Source:</b> Rabbit	<b>UNIPROT ID:</b> Q9Y450	
<b>Isotype:</b> IgG	<b>Full Name:</b> HBS1-like (S. cerevisiae)	
<b>Immunogen Catalog Number:</b> AG0388	<b>Calculated MW:</b> 75 kDa	
	<b>Observed MW:</b> 78 kDa	

## Applications

**Tested Applications:**  
WB, Indirect ELISA

**Species Specificity:**  
Human

## Background Information

HBS1L (HBS1-like), also known as EF-1a or ERFS, is a 684 amino acid protein that belongs to the GTP-binding elongation factor family and exists as multiple alternatively spliced isoforms. Expressed in kidney, brain, heart, placenta, liver, muscle and pancreas, HSB1L is thought to play a role in controlling fetal hemoglobin levels, specifically influencing platelet, monocyte and erythrocyte hemoglobin content. The gene encoding HBS1L maps to a locus on human chromosome 6 that is associated with sickle cell anemia and beta-thalassemia, suggesting a role for HBS1L in the pathogenesis of blood disorders.

## Storage

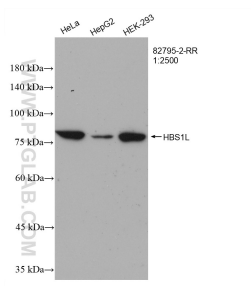
**Storage:**  
Store at -80°C.

**Storage Buffer:**  
PBS Only

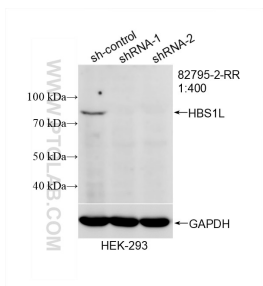
For technical support and original validation data for this product please contact:  
T: 1 (888) 4PTGLAB (1-888-478-4522) (toll free in USA), or 1(312) 455-8498 (outside USA)  
E: [proteintech@ptglab.com](mailto:proteintech@ptglab.com)  
W: [ptglab.com](http://ptglab.com)

This product is exclusively available under Proteintech Group brand and is not available to purchase from any other manufacturer.

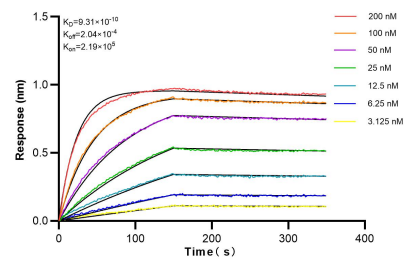
## Selected Validation Data



Various lysates were subjected to SDS PAGE followed by western blot with 82795-2-RR (HBS1L antibody) at dilution of 1:2500 incubated at room temperature for 1.5 hours. This data was developed using the same antibody clone with 82795-2-PBS in a different storage buffer formulation.



WB result of HBS1L antibody (82795-2-RR; 1:400; incubated at room temperature for 1.5 hours) with sh-Control and sh-HBS1L transfected HEK-293 cells. This data was developed using the same antibody clone with 82795-2-PBS in a different storage buffer formulation.



Biolayer interferometry (BLI) kinetic assays of 82795-2-RR against Human HBS1L were performed. The affinity constant is 0.931 nM.