

For Research Use Only

HBS1L Recombinant antibody

Catalog Number: 82795-2-RR

Featured Product



Basic Information

Catalog Number:

82795-2-RR

Size:

100ul , Concentration: 250 ug/ml by Nanodrop;

Source:

Rabbit

Isotype:

IgG

Immunogen Catalog Number:

AG0388

GenBank Accession Number:

BC001465

GeneID (NCBI):

10767

UNIPROT ID:

Q9Y450

Full Name:

HBS1-like (S. cerevisiae)

Calculated MW:

75 kDa

Observed MW:

78 kDa

Purification Method:

Protein A purification

CloneNo.:

2L24

Recommended Dilutions:

WB 1:1000-1:5000

Applications

Tested Applications:

WB, ELISA

Species Specificity:

Human

Positive Controls:

WB : HeLa cells, HEK-293 cells, HepG2 cells

Background Information

HBS1L (HBS1-like), also known as EF-1a or ERFS, is a 684 amino acid protein that belongs to the GTP-binding elongation factor family and exists as multiple alternatively spliced isoforms. Expressed in kidney, brain, heart, placenta, liver, muscle and pancreas, HSB1L is thought to play a role in controlling fetal hemoglobin levels, specifically influencing platelet, monocyte and erythrocyte hemoglobin content. The gene encoding HBS1L maps to a locus on human chromosome 6 that is associated with sickle cell anemia and beta-thalassemia, suggesting a role for HBS1L in the pathogenesis of blood disorders.

Storage

Storage:

Store at -20°C. Stable for one year after shipment.

Storage Buffer:

PBS with 0.02% sodium azide and 50% glycerol pH 7.3.

Aliquoting is unnecessary for -20°C storage

*** 20ul sizes contain 0.1% BSA

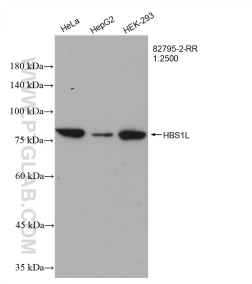
For technical support and original validation data for this product please contact:

T: 1 (888) 4PTGLAB (1-888-478-4522) (toll free in USA), or 1(312) 455-8498 (outside USA)

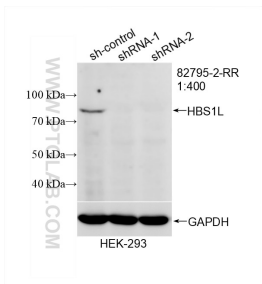
E: proteintech@ptglab.com
W: ptglab.com

This product is exclusively available under Proteintech Group brand and is not available to purchase from any other manufacturer.

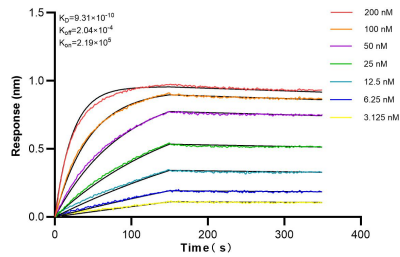
Selected Validation Data



Various lysates were subjected to SDS PAGE followed by western blot with 82795-2-RR (HBS1L antibody) at dilution of 1:2500 incubated at room temperature for 1.5 hours.



WB result of HBS1L antibody (82795-2-RR; 1:400; incubated at room temperature for 1.5 hours) with sh-Control and sh-HBS1L transfected HEK-293 cells.



Biolayer interferometry (BLI) kinetic assays of 82795-2-RR against Human HBS1L were performed. The affinity constant is 0.931 nM.