

For Research Use Only

Lamin B2 Recombinant antibody

Catalog Number: 82801-2-RR



Basic Information

Catalog Number: 82801-2-RR	GenBank Accession Number: BC006551	Purification Method: Protein A purification
Size: 100ul , Concentration: 800 ug/ml by Nanodrop;	GeneID (NCBI): 84823	CloneNo.: 230184E7
Source: Rabbit	UNIPROT ID: Q03252	Recommended Dilutions: WB 1:1000-1:8000 IHC 1:400-1:1600 IF/ICC 1:200-1:800
Isotype: IgG	Full Name: lamin B2	
Immunogen Catalog Number: AG1335	Calculated MW: 68 kDa	
	Observed MW: 68 kDa	

Applications

Tested Applications: WB, IHC, IF/ICC, FC (Intra), ELISA	Positive Controls: WB : HeLa cells, COLO 320 cells, HL-60 cells, Jurkat cells, HT-1080 cells IHC : human stomach cancer tissue, IF/ICC : HepG2 cells,
Species Specificity: human	
Note-IHC: suggested antigen retrieval with TE buffer pH 9.0; (*) Alternatively, antigen retrieval may be performed with citrate buffer pH 6.0	

Background Information

Lamins are nuclear membrane structural components that are important in structural integrity of the nucleus and may also interact with chromatin (PMID: 33033404). Research studies show that lamin B2 knockout mice exhibit neuronal developmental defects and that both proteins are essential for typical brain development (PMID: 20145110). Mutations in Lamin B2 can result in a susceptibility to developing acquired partial lipodystrophy, a rare disorder characterized by the progressive loss of subcutaneous fat in a bilaterally symmetrical fashion (PMID: 16826530).

Storage

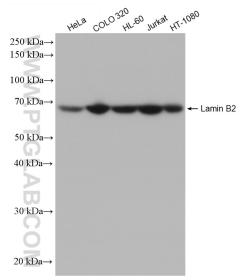
Storage:
Store at -20°C. Stable for one year after shipment.
Storage Buffer:
PBS with 0.02% sodium azide and 50% glycerol pH 7.3.
Aliquoting is unnecessary for -20°C storage

*** 20ul sizes contain 0.1% BSA

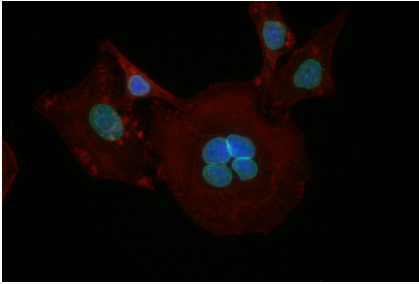
For technical support and original validation data for this product please contact:
T: 1 (888) 4PTGLAB (1-888-478-4522) (toll free in USA), or 1(312) 455-8498 (outside USA)
E: proteintech@ptglab.com
W: ptglab.com

This product is exclusively available under Proteintech Group brand and is not available to purchase from any other manufacturer.

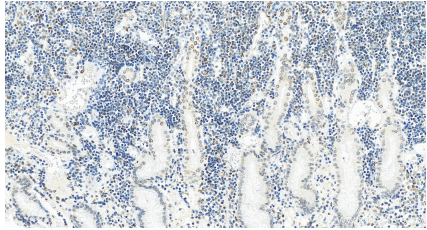
Selected Validation Data



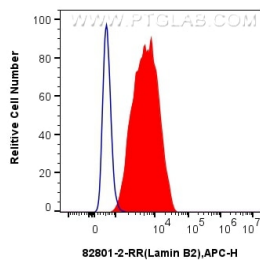
Various lysates were subjected to SDS PAGE followed by western blot with 82801-2-RR (Lamin B2 antibody) at dilution of 1:4000 incubated at room temperature for 1.5 hours.



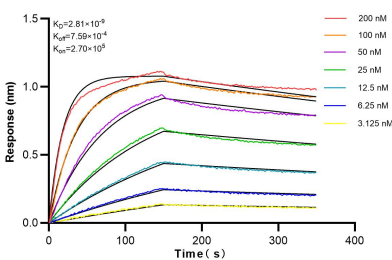
Immunofluorescent analysis of (4% PFA) fixed HepG2 cells using Lamin B2 antibody (82801-2-RR, Clone: 230184E7) at dilution of 1:400 and CoraLite®488-Conjugated AffiniPure Goat Anti-Rabbit IgG(H+L).



Immunohistochemical analysis of paraffin-embedded stomach cancer slide using 82801-2-RR (Lamin B2 antibody) at dilution of 1:800 (under 20x lens). Heat mediated antigen retrieval with Tris-EDTA buffer (pH 9.0).



(blue)1x10⁶ HepG2 cells were intracellularly stained with 0.25 ug Anti-Human Lamin B2 (82801-2-RR, Clone:230184E7) and APC-Conjugated AffiniPure Goat Anti-Rabbit IgG(H+L) at dilution 1:166(red), or 0.25 ug Rabbit IgG control Rabbit PolyAb (30000-0-AP). Cells were fixed and permeabilized with True-Nuclear Transcription Factor Buffer Set.



Biolayer interferometry (BLI) kinetic assays of 82801-2-RR against Human Lamin B2 were performed. The affinity constant is 2.81 nM.