

# CISD2 Recombinant antibody

Catalog Number: 82802-10-RR

## Basic Information

<b>Catalog Number:</b> 82802-10-RR	<b>GenBank Accession Number:</b> BC032300	<b>Purification Method:</b> Protein A purification
<b>Size:</b> 100ul , Concentration: 250 ug/ml by Nanodrop;	<b>GeneID (NCBI):</b> 493856	<b>CloneNo.:</b> 6H13
<b>Source:</b> Rabbit	<b>UNIPROT ID:</b> Q8N5K1	<b>Recommended Dilutions:</b> WB 1:1000-1:5000 IHC 1:50-1:500 IF/ICC 1:200-1:800
<b>Isotype:</b> IgG	<b>Full Name:</b> CDGSH iron sulfur domain 2	
<b>Immunogen Catalog Number:</b> AG4172	<b>Calculated MW:</b> 135 aa, 15 kDa	
	<b>Observed MW:</b> 15 kDa	

## Applications

**Tested Applications:**  
WB, IHC, IF/ICC, ELISA

**Species Specificity:**  
human, mouse

**Note-IHC:** suggested antigen retrieval with **TE buffer pH 9.0; (\*) Alternatively, antigen retrieval may be performed with citrate buffer pH 6.0**

**Positive Controls:**

**WB :** HepG2 cells, HuH-7 cells, L02 cells, K-562 cells

**IHC :** mouse kidney tissue,

**IF/ICC :** HepG2 cells,

## Background Information

CISD2 gene encodes a 15 kDa CDGSH iron-sulfur domain-containing protein 2, which is also named Miner1 or NAF-1, this protein was reported on endoplasmic reticulum membrane or mitochondrion outer membrane. Defects in CISD2 are the cause of Wolfram syndrome type 2 (WFS2), a rare disorder characterized by juvenile-onset insulin-dependent diabetes mellitus with optic atrophy. CISD2 regulates autophagy program by interacting BCL2, contributing to antagonize BECN1-mediated cellular autophagy at the endoplasmic reticulum.

## Storage

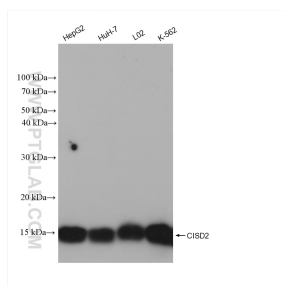
**Storage:**  
Store at -20°C. Stable for one year after shipment.  
**Storage Buffer:**  
PBS with 0.02% sodium azide and 50% glycerol pH 7.3.  
**Aliquoting is unnecessary for -20°C storage**

**\*\*\* 20ul sizes contain 0.1% BSA**

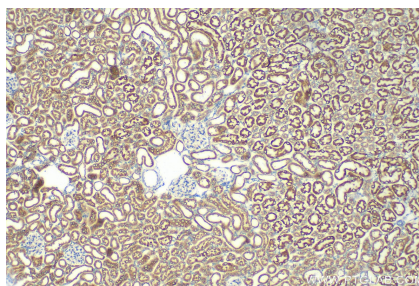
For technical support and original validation data for this product please contact:  
T: 1 (888) 4PTGLAB (1-888-478-4522) (toll free in USA), or 1(312) 455-8498 (outside USA)  
E: [proteintech@ptglab.com](mailto:proteintech@ptglab.com)  
W: [ptglab.com](http://ptglab.com)

This product is exclusively available under Proteintech Group brand and is not available to purchase from any other manufacturer.

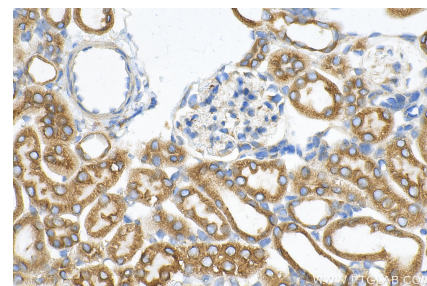
## Selected Validation Data



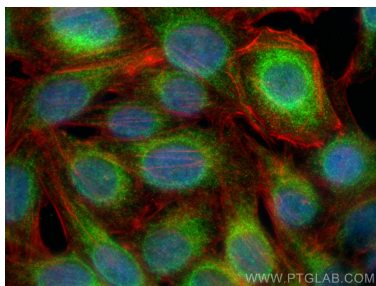
Various lysates were subjected to SDS PAGE followed by western blot with 82802-10-RR (CISD2 antibody) at dilution of 1:2500 incubated at room temperature for 1.5 hours.



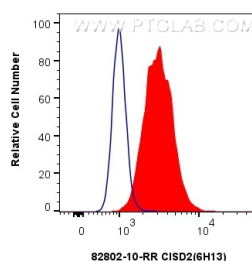
Immunohistochemical analysis of paraffin-embedded mouse kidney tissue slide using 82802-10-RR (CISD2 antibody) at dilution of 1:200 (under 10x lens). Heat mediated antigen retrieval with Tris-EDTA buffer (pH 9.0).



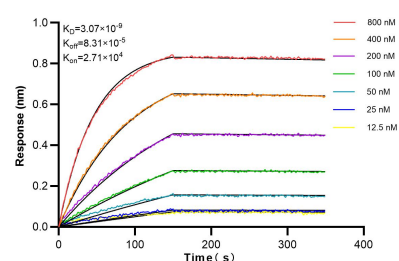
Immunohistochemical analysis of paraffin-embedded mouse kidney tissue slide using 82802-10-RR (CISD2 antibody) at dilution of 1:200 (under 40x lens). Heat mediated antigen retrieval with Tris-EDTA buffer (pH 9.0).



Immunofluorescent analysis of (4% PFA) fixed HepG2 cells using Cisd2 antibody (82802-10-RR, Clone: 6H13) at dilution of 1:400 and Multi-rAb CoraLite® Plus 488-Goat Anti-Rabbit Recombinant Secondary Antibody (H+L) (RGAR002), CL594-phalloidin (red).



$1 \times 10^6$  HepG2 cells were intracellularly stained with 0.25  $\mu$ g Cisd2 Recombinant antibody (82802-10-RR, Clone: 6H13) and CoraLite® 488-Conjugated Goat Anti-Rabbit IgG(H+L) (SA00013-2)(red), or 0.25  $\mu$ g Rabbit IgG Isotype Control Recombinant Antibody (98136-1-RR, Clone: 240953C9) (blue). Cells were fixed with 4% PFA and permeabilized with Flow Cytometry Perm Buffer (PF00011-C).



Biolayer interferometry (BLI) kinetic assays of 82802-10-RR against Human Cisd2 were performed. The affinity constant is 3.07 nM.