

For Research Use Only

HP Recombinant antibody, PBS Only (Capture)

Catalog Number: 82812-8-PBS



Basic Information

Catalog Number: 82812-8-PBS	GenBank Accession Number: BC121125	Purification Method: Protein A purification
Size: 100ug , Concentration: 1mg/ml by Nanodrop;	GeneID (NCBI): 3240	CloneNo.: 1B16
Source: Rabbit	UNIPROT ID: P00738	
Isotype: IgG	Full Name: haptoglobin	

Applications

Tested Applications:
Sandwich ELISA, Indirect ELISA, Sample test

Species Specificity:
human

Product Information

82812-8-PBS targets HP as part of a matched antibody pair:

MP00779-1: 82812-8-PBS capture and 82812-2-PBS detection (validated in Sandwich ELISA)

Unconjugated rabbit recombinant monoclonal antibody in PBS only (BSA and azide free) storage buffer at a concentration of 1 mg/mL, ready for conjugation. Created using Proteintech's proprietary in-house recombinant technology. Recombinant production enables unrivalled batch-to-batch consistency, easy scale-up, and future security of supply.

This conjugation ready format makes antibodies ideal for use in many applications including: ELISAs, multiplex assays requiring matched pairs, mass cytometry, and multiplex imaging applications. Antibody use should be optimized by the end user for each application and assay.

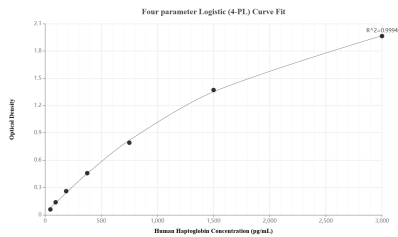
Storage

Storage:
Store at -80°C.
Storage Buffer:
PBS Only

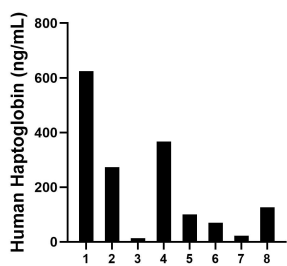
For technical support and original validation data for this product please contact:
T: 1 (888) 4PTGLAB (1-888-478-4522) (toll free in USA), or 1(312) 455-8498 (outside USA)
E: proteintech@ptglab.com
W: ptglab.com

This product is exclusively available under Proteintech Group brand and is not available to purchase from any other manufacturer.

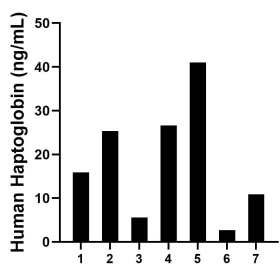
Selected Validation Data



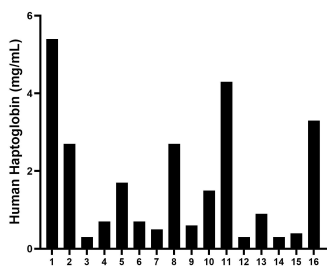
Sandwich ELISA standard curve of MP00779-1, Human Haptoglobin Recombinant Matched Antibody Pair - PBS only. 82812-8-PBS was coated to a plate as the capture antibody and incubated with serial dilutions of standard Eg0445. 82812-2-PBS was HRP conjugated as the detection antibody. Range: 46.9-3000 pg/mL.



Saliva of eight individual healthy human donors was measured. The Haptoglobin concentration of detected samples was determined to be 199.6 ng/mL with a range of 14.0 - 624.8 ng/mL.



Urine of seven individual healthy human donors was measured. The Haptoglobin concentration of detected samples was determined to be 18.3 ng/mL with a range of 2.7 - 41.0 ng/mL.



Serum of sixteen individual healthy human donors was measured. The Haptoglobin concentration of detected samples was determined to be 1.6 mg/mL with a range of 0.3-5.4 mg/mL.