

For Research Use Only

Growth Hormone Recombinant antibody, PBS Only

Catalog Number: 82813-2-PBS



Basic Information

Catalog Number:

82813-2-PBS

Size:

100ug, Concentration: 1 mg/ml by Nanodrop;

Source:

Rabbit

Isotype:

IgG

GenBank Accession Number:

BC075012

GeneID (NCBI):

2688

UNIPROT ID:

P01241

Full Name:

GH1

Calculated MW:

217 aa, 25 kDa

Observed MW:

22 kDa

Purification Method:

Protein A purification

CloneNo.:

4G8

Applications

Tested Applications:

WB, IHC, Indirect ELISA

Species Specificity:

human, rat

Background Information

GH1, also named as GH and GH-N, belongs to the somatotropin/prolactin family. GH1 plays an important role in growth control. Its major role in stimulating body growth is to stimulate the liver and other tissues to secrete IGF-1. It stimulates both the differentiation and proliferation of myoblasts. It also stimulates amino acid uptake and protein synthesis in muscle and other tissues.

Storage

Storage:

Store at -80°C.

Storage Buffer:

PBS Only

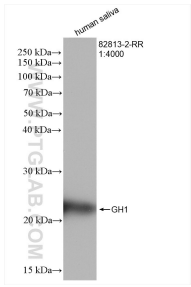
For technical support and original validation data for this product please contact:

T: 1 (888) 4PTGLAB (1-888-478-4522) (toll free in USA), or 1(312) 455-8498 (outside USA)

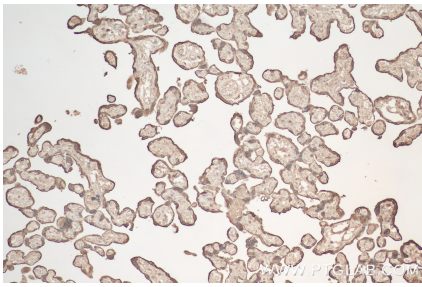
E: proteintech@ptglab.com
W: ptglab.com

This product is exclusively available under Proteintech Group brand and is not available to purchase from any other manufacturer.

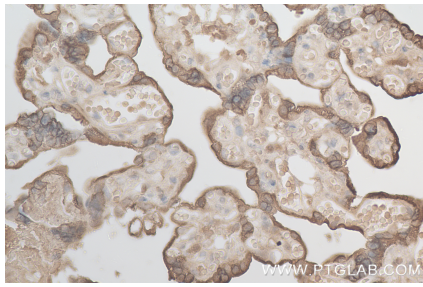
Selected Validation Data



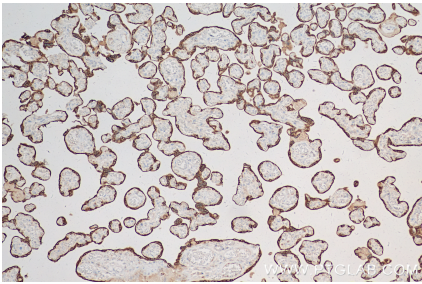
Human placenta tissue was subjected to SDS PAGE followed by western blot with 82813-2-RR (GH1 antibody) at dilution of 1:4000 incubated at room temperature for 1.5 hours. This data was developed using the same antibody clone with 82813-2-PBS in a different storage buffer formulation.



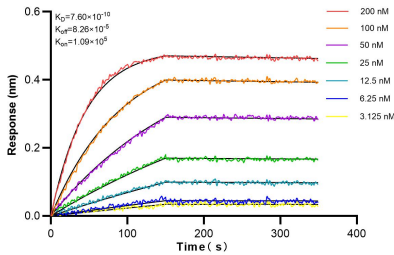
Immunohistochemical analysis of paraffin-embedded human placenta tissue slide using 82813-2-RR (GH1 antibody) at dilution of 1:2500 (under 10x lens). Heat mediated antigen retrieval with Tris-EDTA buffer (pH 9.0). This data was developed using the same antibody clone with 82813-2-PBS in a different storage buffer formulation.



Immunohistochemical analysis of paraffin-embedded human placenta tissue slide using 82813-2-RR (GH1 antibody) at dilution of 1:2500 (under 40x lens). Heat mediated antigen retrieval with Tris-EDTA buffer (pH 9.0). This data was developed using the same antibody clone with 82813-2-PBS in a different storage buffer formulation.



Immunohistochemical analysis of paraffin-embedded human placenta tissue slide using 82813-2-RR (Growth Hormone antibody) at dilution of 1:5000 (under 10x lens). Heat mediated antigen retrieval with Tris-EDTA buffer (pH 9.0). This data was developed using the same antibody clone with 82813-2-PBS in a different storage buffer formulation.



Bioluminescence resonance energy transfer (BLI) kinetic assays of 82813-2-RR against Human GH1 were performed. The affinity constant is 0.76 nM.