

For Research Use Only

GH1 Recombinant antibody

Catalog Number: 82813-2-RR



Basic Information

Catalog Number: 82813-2-RR	GenBank Accession Number: BC075012	Purification Method: Protein A purification
Size: 100ul , Concentration: 400 µg/ml by Nanodrop;	GeneID (NCBI): 2688	CloneNo.: 4G8
Source: Rabbit	Full Name: GH1	Recommended Dilutions: WB 1:1000-1:8000 IHC 1:500-1:2000
Isotype: IgG	Calculated MW: 217 aa, 25 kDa	
	Observed MW: 22 kDa	

Applications

Tested Applications:

IHC, WB, ELISA

Species Specificity:

Human

Note-IHC: suggested antigen retrieval with TE buffer pH 9.0; (*) Alternatively, antigen retrieval may be performed with citrate buffer pH 6.0

Positive Controls:

WB : human saliva,

IHC : human placenta tissue,

Background Information

GH1, also named as GH and GH-N, belongs to the somatotropin/prolactin family. GH1 plays an important role in growth control. Its major role in stimulating body growth is to stimulate the liver and other tissues to secrete IGF-1. It stimulates both the differentiation and proliferation of myoblasts. It also stimulates amino acid uptake and protein synthesis in muscle and other tissues.

Storage

Storage:

Store at -20°C. Stable for one year after shipment.

Storage Buffer:

PBS with 0.02% sodium azide and 50% glycerol pH 7.3.

Aliquoting is unnecessary for -20°C storage

*** 20ul sizes contain 0.1% BSA

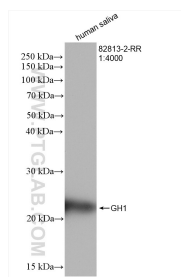
For technical support and original validation data for this product please contact:

T: 1 (888) 4PTGLAB (1-888-478-4522) (toll free in USA), or 1(312) 455-8498 (outside USA)

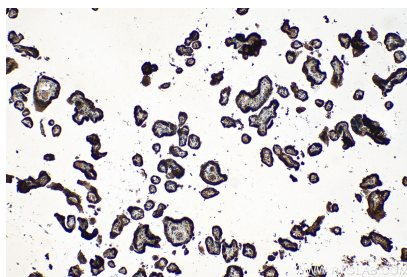
E: proteintech@ptglab.com
W: ptglab.com

This product is exclusively available under Proteintech Group brand and is not available to purchase from any other manufacturer.

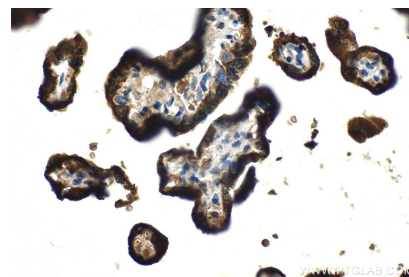
Selected Validation Data



Human placenta tissue was subjected to SDS PAGE followed by western blot with 82813-2-RR (GH1 antibody) at dilution of 1:4000 incubated at room temperature for 1.5 hours.



Immunohistochemical analysis of paraffin-embedded human placenta tissue slide using 82813-2-RR (GH1 antibody) at dilution of 1:1000 (under 10x lens). Heat mediated antigen retrieval with Tris-EDTA buffer (pH 9.0).



Immunohistochemical analysis of paraffin-embedded human placenta tissue slide using 82813-2-RR (GH1 antibody) at dilution of 1:1000 (under 40x lens). Heat mediated antigen retrieval with Tris-EDTA buffer (pH 9.0).