

For Research Use Only

GH1 Recombinant antibody, PBS Only (Detector)

Catalog Number: 82813-9-PBS



Basic Information

Catalog Number: 82813-9-PBS	GenBank Accession Number: BC075012	Purification Method: Protein A purification
Size: 100ug , Concentration: 1 mg/ml by Nanodrop;	GeneID (NCBI): 2688	CloneNo.: 250390B5
Source: Rabbit	UNIPROT ID: P01241	
Isotype: IgG	Full Name: GH1	
Immunogen Catalog Number: HZ-1007	Calculated MW: 217 aa, 25 kDa	

Applications

Tested Applications:
Sandwich ELISA, Indirect ELISA, Sample test

Species Specificity:
human

Product Information

82813-9-PBS targets GH1 as part of a matched antibody pair:

MP02272-1: 82813-8-PBS capture and 82813-9-PBS detection (validated in Sandwich ELISA)

Unconjugated rabbit recombinant monoclonal antibody in PBS only (BSA and azide free) storage buffer at a concentration of 1 mg/mL, ready for conjugation. Created using Proteintech's proprietary in-house recombinant technology. Recombinant production enables unrivalled batch-to-batch consistency, easy scale-up, and future security of supply.

This conjugation ready format makes antibodies ideal for use in many applications including: ELISAs, multiplex assays requiring matched pairs, mass cytometry, and multiplex imaging applications. Antibody use should be optimized by the end user for each application and assay.

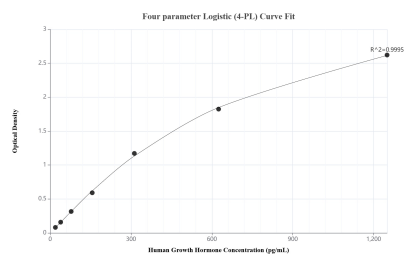
Storage

Storage:
Store at -80°C.
Storage Buffer:
PBS only, pH7.3

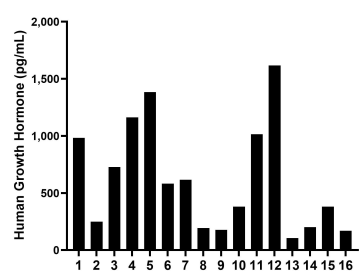
For technical support and original validation data for this product please contact:
T: 1 (888) 4PTGLAB (1-888-478-4522) (toll free in USA), or 1(312) 455-8498 (outside USA)
E: proteintech@ptglab.com
W: ptglab.com

This product is exclusively available under Proteintech Group brand and is not available to purchase from any other manufacturer.

Selected Validation Data



Sandwich ELISA standard curve of MP02272-1, Human Growth Hormone Recombinant Matched Antibody Pair - PBS only. 82813-8-PBS was coated to a plate as the capture antibody and incubated with serial dilutions of standard HZ-1007. 82813-9-PBS was HRP conjugated as the detection antibody. Range: 19.5-1250 pg/mL.



Serum of sixteen individual healthy human donors was measured. The Growth Hormone concentration of detected samples was determined to be 622.3 pg/mL with a range of 106.6-1,616.6 pg/mL.