

For Research Use Only

# Cytokeratin 18 Recombinant antibody

Catalog Number: 82817-5-RR



## Basic Information

<b>Catalog Number:</b> 82817-5-RR	<b>GenBank Accession Number:</b> BC000180	<b>Purification Method:</b> Protein A purification
<b>Size:</b> 100ul , Concentration: 500 ug/ml by Nanodrop;	<b>GeneID (NCBI):</b> 3875	<b>CloneNo.:</b> 4F2
<b>Source:</b> Rabbit	<b>UNIPROT ID:</b> P05783	<b>Recommended Dilutions:</b> WB 1:2000-1:10000
<b>Isotype:</b> IgG	<b>Full Name:</b> keratin 18	<b>IHC 1:50-1:500</b>
<b>Immunogen Catalog Number:</b> AG1260	<b>Calculated MW:</b> 48 kDa	<b>IF/ICC 1:50-1:500</b>
	<b>Observed MW:</b> 48 kDa	

## Applications

**Tested Applications:**  
WB, IHC, IF/ICC, ELISA

**Species Specificity:**  
human, mouse, rat

**Note-IHC: suggested antigen retrieval with TE buffer pH 9.0; (\*) Alternatively, antigen retrieval may be performed with citrate buffer pH 6.0**

**Positive Controls:**

**WB :** A431 cells, A549 cells, HCT 116 cells, HepG2 cells, K-562 cells, mouse liver tissue, rat liver tissue

**IHC :** human appendicitis tissue, human breast cancer tissue, human liver tissue, human renal cell carcinoma tissue

**IF/ICC :** HepG2 cells,

## Background Information

Cytokeratin 18, also known as CK18, is a type I intermediate filament protein which is found primarily in non squamous epithelia and is present in a majority of adenocarcinomas and ductal carcinomas but not in squamous cell carcinomas. CK18 and its coexpressed complementary type II keratin partner, CK8, are persistently expressed in a variety of adult epithelial organs, such as the liver, lung, kidney, pancreas, gastrointestinal tract, and mammary gland, and are also expressed by cancers that arise from these tissues. In the absence of CK8, the CK18 protein is degraded and keratin intermediate filaments are not formed.

## Storage

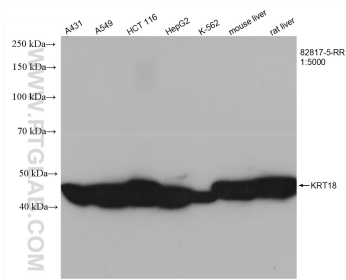
**Storage:**  
Store at -20°C. Stable for one year after shipment.  
**Storage Buffer:**  
PBS with 0.02% sodium azide and 50% glycerol pH 7.3.  
**Aliquoting is unnecessary for -20°C storage**

**\*\*\* 20ul sizes contain 0.1% BSA**

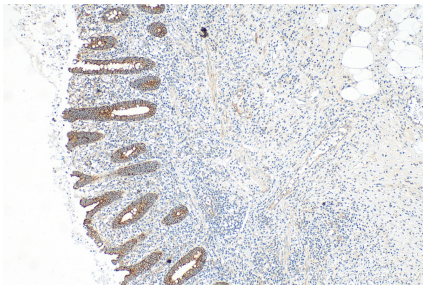
For technical support and original validation data for this product please contact:  
T: 1 (888) 4PTGLAB (1-888-478-4522) (toll free in USA), or 1(312) 455-8498 (outside USA)  
E: [proteintech@ptglab.com](mailto:proteintech@ptglab.com)  
W: [ptglab.com](http://ptglab.com)

This product is exclusively available under Proteintech Group brand and is not available to purchase from any other manufacturer.

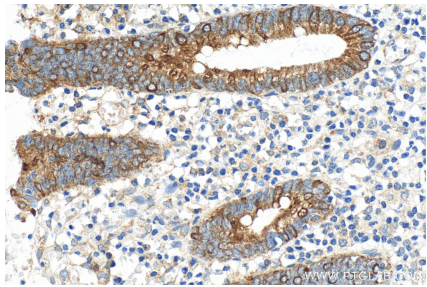
## Selected Validation Data



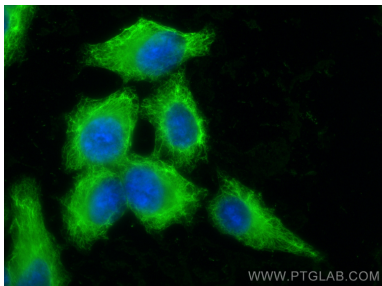
Various lysates were subjected to SDS PAGE followed by western blot with 82817-5-RR (KRT18 antibody) at dilution of 1:5000 incubated at room temperature for 1.5 hours.



Immunohistochemical analysis of paraffin-embedded human appendicitis tissue slide using 82817-5-RR (Cytokeratin 18 antibody) at dilution of 1:200 (under 10x lens). Heat mediated antigen retrieval with Tris-EDTA buffer (pH 9.0).



Immunohistochemical analysis of paraffin-embedded human appendicitis tissue slide using 82817-5-RR (Cytokeratin 18 antibody) at dilution of 1:200 (under 40x lens). Heat mediated antigen retrieval with Tris-EDTA buffer (pH 9.0).



Immunofluorescent analysis of (-20°C Ethanol) fixed HepG2 cells using Cytokeratin 18 antibody (82817-5-RR, Clone: 4F2 ) at dilution of 1:200 and Multi-rAb CoraLite ® Plus 488-Goat Anti-Rabbit Recombinant Secondary Antibody (H+L) (RGAR002).