

For Research Use Only

# Di-Methyl-Histone H3 (Lys56) Recombinant monoclonal antibody, PBS Only

Catalog Number: 82828-12-PBS



## Basic Information

<b>Catalog Number:</b> 82828-12-PBS	<b>GenBank Accession Number:</b> BC066245	<b>Purification Method:</b> Protein A purification
<b>Size:</b> 100ug , Concentration: 1 mg/ml by Nanodrop;	<b>GeneID (NCBI):</b> 8350	<b>CloneNo.:</b> 243027A1
<b>Source:</b> Rabbit	<b>UNIPROT ID:</b> P68431	
<b>Isotype:</b> IgG	<b>Full Name:</b> histone cluster 1, H3a	
	<b>Observed MW:</b> 15-18 kDa	

## Applications

**Tested Applications:**  
WB, IF/ICC, Dot Blot, Indirect ELISA

**Species Specificity:**  
human, mouse, rat

## Background Information

Histones, including H1/H5 (linker histones), H2, H3, and H4 (core histones), are nucleic proteins which interact with DNA to form the nucleosomes and play important roles in gene regulation and DNA replication. Histone proteins are highly post-translationally modified while Histone H3 is the most extensively modified. The NSD family histone methyltransferases, including NSD1, NSD2 and NSD3, play crucial roles in chromatin regulation and are implicated in oncogenesis (PMID: 33361816).

## Storage

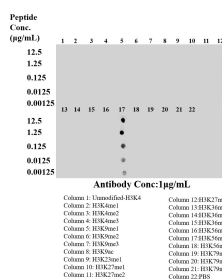
**Storage:**  
Store at -80°C.

**Storage Buffer:**  
PBS only, pH7.3

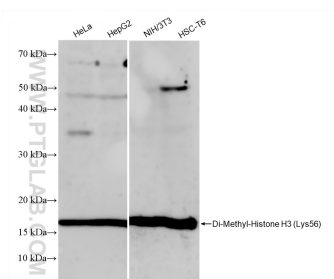
For technical support and original validation data for this product please contact:  
T: 1 (888) 4PTGLAB (1-888-478-4522) (toll free in USA), or 1(312) 455-8498 (outside USA)  
E: [proteintech@ptglab.com](mailto:proteintech@ptglab.com)  
W: [ptglab.com](http://ptglab.com)

This product is exclusively available under Proteintech Group brand and is not available to purchase from any other manufacturer.

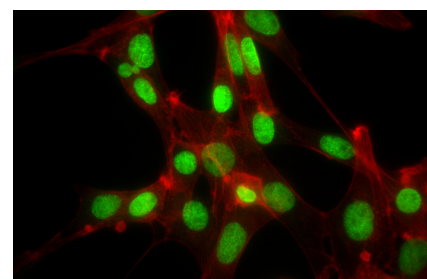
## Selected Validation Data



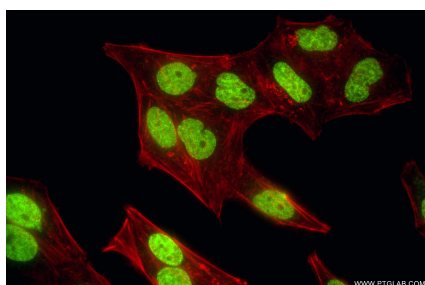
Dot blot analysis was used to confirm the specificity of 82828-12-RR (Di-Methyl-Histone H3 (Lys56) antibody. Peptides were spotted onto NC and probed with antibody at 1 µg/mL. The amount of peptide (µg/mL) spotted is indicated next to each row. This data was developed using the same antibody clone with 82828-12-PBS in a different storage buffer formulation.



Various lysates were subjected to SDS PAGE followed by western blot with 82828-12-RR (HIST1H3A(H3K56me2) antibody) at dilution of 1:1000 incubated at room temperature for 1.5 hours. This data was developed using the same antibody clone with 82828-12-PBS in a different storage buffer formulation.



Immunofluorescent analysis of (4% PFA) fixed NIH/3T3 cells using Di-Methyl-Histone H3 (Lys56) antibody (82828-12-RR, Clone: 243027A1 ) at dilution of 1:500 and CoraLite®488-Conjugated Goat Anti-Rabbit IgG(H+L) (SA00013-2), CL594-Phalloidin (red). This data was developed using the same antibody clone with 82828-12-PBS in a different storage buffer formulation.



Immunofluorescent analysis of (4% PFA) fixed HepG2 cells using Di-Methyl-Histone H3 (Lys56) antibody (82828-12-RR, Clone: 243027A1) at dilution of 1:500 and CoraLite®488-Conjugated Goat Anti-Rabbit IgG(H+L) (SA00013-2), CL594-Phalloidin (red). This data was developed using the same antibody clone with 82828-12-PBS in a different storage buffer formulation.