

For Research Use Only

Di-Methyl-Histone H3 (Lys56) Recombinant monoclonal antibody

Catalog Number: 82828-12-RR



Basic Information

Catalog Number: 82828-12-RR	GenBank Accession Number: BC066245	Purification Method: Protein A purification
Size: 100ul , Concentration: 1000 µg/ml by Nanodrop;	GeneID (NCBI): 8350	CloneNo.: 243027A1
Source: Rabbit	UNIPROT ID: P68431	Recommended Dilutions: WB: 1:500-1:2000 IF/ICC: 1:250-1:1000 Dot Blot: 1:10-1:100
Isotype: IgG	Full Name: histone cluster 1, H3a	
	Observed MW: 15-18 kDa	

Applications

Tested Applications: WB, IF/ICC, Dot Blot, ELISA	Positive Controls:
Species Specificity: human, mouse, rat	WB : HeLa cells, HepG2 cells, NIH/3T3 cells, HSC-T6 cells IF/ICC : HepG2 cells, NIH/3T3 cells Dot Blot : peptide,

Background Information

Histones, including H1/H5 (linker histones), H2, H3, and H4 (core histones), are nucleic proteins which interact with DNA to form the nucleosomes and play important roles in gene regulation and DNA replication. Histone proteins are highly post-translationally modified while Histone H3 is the most extensively modified. The NSD family histone methyltransferases, including NSD1, NSD2 and NSD3, play crucial roles in chromatin regulation and are implicated in oncogenesis (PMID: 33361816).

Storage

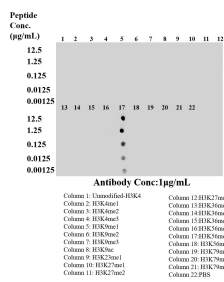
Storage:
Store at -20°C. Stable for one year after shipment.
Storage Buffer:
PBS with 0.02% sodium azide and 50% glycerol, pH7.3
Aliquoting is unnecessary for -20°C storage

*** 20ul sizes contain 0.1% BSA

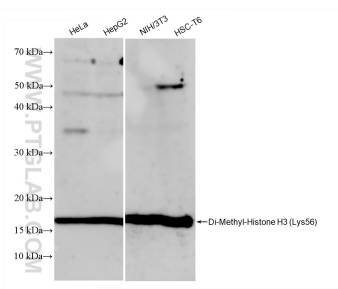
For technical support and original validation data for this product please contact:
T: 1 (888) 4PTGLAB (1-888-478-4522) (toll free in USA), or 1(312) 455-8498 (outside USA)
E: proteintech@ptglab.com
W: ptglab.com

This product is exclusively available under Proteintech Group brand and is not available to purchase from any other manufacturer.

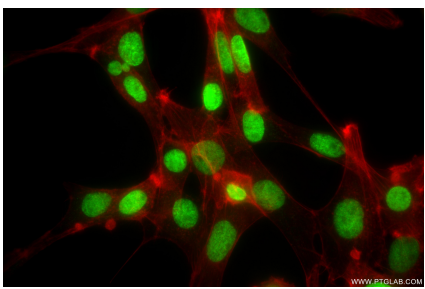
Selected Validation Data



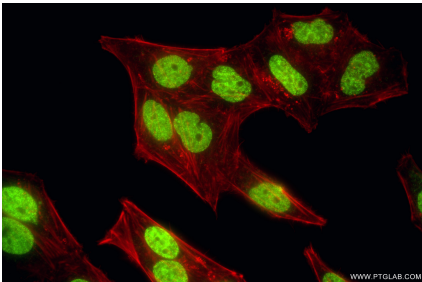
Dot blot analysis was used to confirm the specificity of 82828-12-RR (Di-Methyl-Histone H3 (Lys56) antibody. Peptides were spotted onto NC and probed with antibody at 1 µg/ml. The amount of peptide (µg/mL) spotted is indicated next to each row.



Various lysates were subjected to SDS PAGE followed by western blot with 82828-12-RR (HIST1H3A(H3K56me2) antibody) at dilution of 1:1000 incubated at room temperature for 1.5 hours.



Immunofluorescent analysis of (4% PFA) fixed NIH/3T3 cells using Di-Methyl-Histone H3 (Lys56) antibody (82828-12-RR, Clone: 243027A1) at dilution of 1:500 and CoraLite®488-Conjugated Goat Anti-Rabbit IgG(H+L) (SA00013-2), CL594-Phalloidin (red).



Immunofluorescent analysis of (4% PFA) fixed HepG2 cells using Di-Methyl-Histone H3 (Lys56) antibody (82828-12-RR, Clone: 243027A1) at dilution of 1:500 and CoraLite®488-Conjugated Goat Anti-Rabbit IgG(H+L) (SA00013-2), CL594-Phalloidin (red).