

For Research Use Only

# ARL13B Recombinant antibody

Catalog Number: 82834-2-RR



## Basic Information

<b>Catalog Number:</b> 82834-2-RR	<b>GenBank Accession Number:</b> BC094725	<b>Purification Method:</b> Protein A purification
<b>Size:</b> 100ul , Concentration: 1000 ug/ml by Nanodrop;	<b>GeneID (NCBI):</b> 200894	<b>CloneNo.:</b> 3H5
<b>Source:</b> Rabbit	<b>UNIPROT ID:</b> Q3SXY8	<b>Recommended Dilutions:</b> IF/ICC 1:200-1:800
<b>Isotype:</b> IgG	<b>Full Name:</b> ADP-ribosylation factor-like 13B	
<b>Immunogen Catalog Number:</b> AG12015	<b>Calculated MW:</b> 48 kDa	

## Applications

<b>Tested Applications:</b> IF/ICC, ELISA	<b>Positive Controls:</b> IF/ICC : Starvation treated hTERT-RPE1 cells, hTERT-RPE1 cells
<b>Species Specificity:</b> human	

## Background Information

ARL13B, also named as ARL2L1, is a small ciliary G protein of the Ras superfamily. Localized in the cilia, it is required for cilium biogenesis and sonic hedgehog signaling. Defects in ARL13B are the cause of Joubert syndrome (JS) which is an autosomal recessive disorder characterized by a distinctive cerebellar malformation (PMID: 19906870). ARL13B can be used to mark the cilia (PMID:22072986). The second antibody is used against guinea pigs.

## Storage

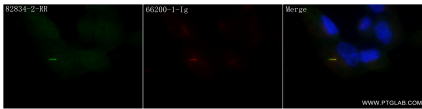
**Storage:**  
Store at -20°C. Stable for one year after shipment.  
**Storage Buffer:**  
PBS with 0.02% sodium azide and 50% glycerol pH 7.3.  
Aliquoting is unnecessary for -20°C storage

\*\*\* 20ul sizes contain 0.1% BSA

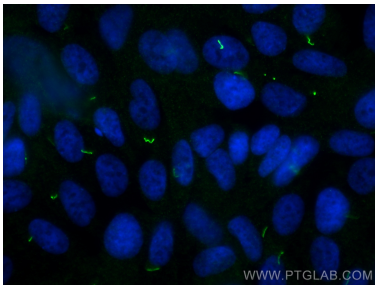
For technical support and original validation data for this product please contact:  
T: 1 (888) 4PTGLAB (1-888-478-4522) (toll free in USA), or 1(312) 455-8498 (outside USA)  
E: [proteintech@ptglab.com](mailto:proteintech@ptglab.com)  
W: [ptglab.com](http://ptglab.com)

This product is exclusively available under Proteintech Group brand and is not available to purchase from any other manufacturer.

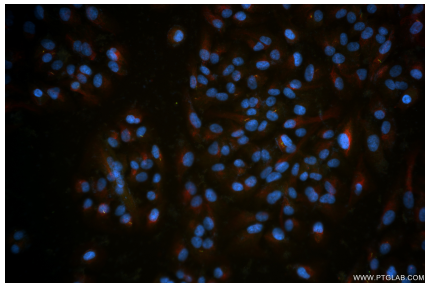
## Selected Validation Data



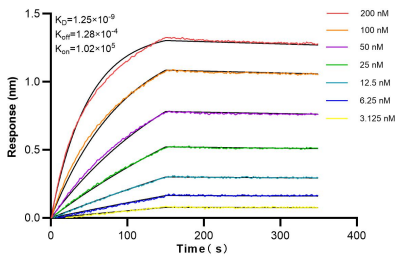
Immunofluorescent analysis of (4% PFA) fixed Starvation treated hTERT-RPE1 cells using ARL13B antibody (82834-2-RR, Clone: 3H5 ) at dilution of 1:400 and CoraLite®488-Conjugated AffiniPure Goat Anti-Rabbit IgG(H+L) (SA00013-2), Acetyl-Tubulin (Lys40) antibody (66200-1-Ig, Clone: 7E5H8, red).



Immunofluorescent analysis of (4% PFA) fixed hTERT-RPE1 cells using ARL13B antibody (82834-2-RR, Clone: 3H5 ) at dilution of 1:400 and CoraLite®488-Conjugated Goat Anti-Rabbit IgG(H+L) (SA00013-2).



Immunofluorescent analysis of (4% PFA) fixed Starvation treated hTERT-RPE1 cells using ARL13B antibody (82834-2-RR, Clone: 3H5 ) at dilution of 1:400 and CoraLite®488-Conjugated Goat Anti-Rabbit IgG(H+L) (SA00013-2), Acetyl-Tubulin (Lys40) antibody (66200-1-Ig, Clone: 7E5H8, red).



Biolayer interferometry (BLI) kinetic assays of 82834-2-RR against Human ARL13B were performed. The affinity constant is 1.25 nM.