

For Research Use Only

MSH3 Recombinant antibody, PBS Only



Catalog Number: 82845-3-PBS

Basic Information

Catalog Number: 82845-3-PBS	GenBank Accession Number: BC130434	Purification Method: Protein A purification
Size: 100ug , Concentration: 1 mg/ml by Nanodrop;	GeneID (NCBI): 4437	CloneNo.: 1J23
Source: Rabbit	UNIPROT ID: P20585	
Isotype: IgG	Full Name: mutS homolog 3 (E. coli)	
Immunogen Catalog Number: AG18060	Calculated MW: 1137 aa, 127 kDa	
	Observed MW: 127 kDa	

Applications

Tested Applications:
WB, IF, Indirect ELISA

Species Specificity:
Human

Background Information

MSH3 is a DNA mismatch repair (MMR) gene that heterodimerizes with MSH2 to form MutS beta which binds to DNA mismatches thereby initiating DNA repair. It undergoes frequent somatic mutation in colorectal cancers (CRCs) with MMR deficiency. MSH3 mismatch repair protein regulates sensitivity to cytotoxic drugs and a histone deacetylase inhibitor in human colon carcinoma cells (PMID: 23724141, PMID:32671096).

Storage

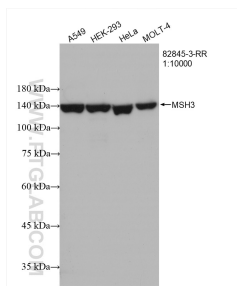
Storage:
Store at -80°C.

Storage Buffer:
PBS Only

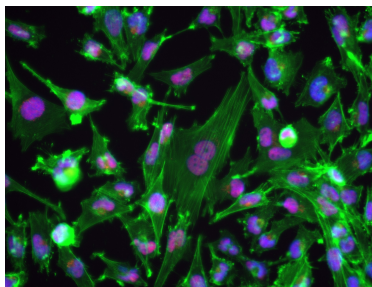
For technical support and original validation data for this product please contact:
T: 1 (888) 4PTGLAB (1-888-478-4522) (toll free in USA), or 1(312) 455-8498 (outside USA) E: proteintech@ptglab.com W: ptglab.com

This product is exclusively available under Proteintech Group brand and is not available to purchase from any other manufacturer.

Selected Validation Data



Various lysates were subjected to SDS PAGE followed by western blot with 82845-3-RR (MSH3 antibody) at dilution of 1:10000 incubated at room temperature for 1.5 hours. This data was developed using the same antibody clone with 82845-3-PBS in a different storage buffer formulation.



Immunofluorescent analysis of (4% PFA) fixed U-251 cells using MSH3 antibody (82845-3-RR, Clone: 1J23) at dilution of 1:1500 and CoraLite® 594-Conjugated AffiniPure Goat Anti-Rabbit IgG(H+L). This data was developed using the same antibody clone with 82845-3-PBS in a different storage buffer formulation.