

For Research Use Only

B7-H4 Recombinant antibody

Catalog Number: 82850-1-RR



Basic Information

Catalog Number: 82850-1-RR	GenBank Accession Number: NM_024626	Purification Method: Protein A purification
Size: 100ul , Concentration: 1000 µg/ml by Nanodrop;	GeneID (NCBI): 79679	CloneNo.: 4C8
Source: Rabbit	Full Name: V-set domain containing T cell activation inhibitor 1	Recommended Dilutions: WB 1:1000-1:5000
Isotype: IgG	Calculated MW: 282 aa, 31 kDa	
	Observed MW: 75 kDa	

Applications

Tested Applications:
WB, ELISA

Species Specificity:
Human, Mouse

Positive Controls:

WB : HeLa cells, SKOV-3 cells, BGC-823 cells, SK-BR-3 cells

Background Information

B7-H4, also named VTCN1, B7X, or B7S1, is a single-pass type I membrane protein, which contains two immunoglobulin-like domains and belongs to the immunoglobulin superfamily. B7-H4 negatively regulates T-cell mediated immune response by inhibiting T-cell activation, proliferation, cytokine production and development of cytotoxicity. B7-H4 is over-expressed in many cancers, including breast, ovarian, endometrial, renal cell and non-small-cell lung cancers. The predicted molecular weight of B7-H4 is 31 kDa. The glycosylated B7-H4 is 50 to 80 kDa, and the non-glycosylated form is 28 kDa.

Storage

Storage:

Store at -20°C. Stable for one year after shipment.

Storage Buffer:

PBS with 0.02% sodium azide and 50% glycerol pH 7.3.

Aliquoting is unnecessary for -20°C storage

*** 20ul sizes contain 0.1% BSA

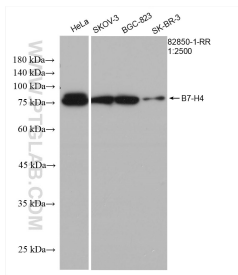
For technical support and original validation data for this product please contact:

T: 1 (888) 4PTGLAB (1-888-478-4522) (toll free
in USA), or 1(312) 455-8498 (outside USA)

E: proteintech@ptglab.com
W: ptglab.com

This product is exclusively available under Proteintech Group brand and is not available to purchase from any other manufacturer.

Selected Validation Data



Various lysates were subjected to SDS PAGE followed by western blot with 82850-1-RR (B7-H4 antibody) at dilution of 1:2500 incubated at room temperature for 1.5 hours.