

For Research Use Only

TLN1 Recombinant antibody, PBS Only (Detector)

Catalog Number: 82856-15-PBS



Basic Information

Catalog Number: 82856-15-PBS	GenBank Accession Number: BC042923	Purification Method: Protein A purification
Size: 100ug , Concentration: 1 mg/ml by Nanodrop;	GeneID (NCBI): 7094	CloneNo.: 240294F4
Source: Rabbit	UNIPROT ID: Q9Y490	
Isotype: IgG	Full Name: talin 1	
Immunogen Catalog Number: AG5367	Calculated MW: 2541 aa, 270 kDa	

Applications

Tested Applications:
Cytometric bead array, Sandwich ELISA, Indirect ELISA, Sample test

Species Specificity:
human

Product Information

82856-15-PBS targets TLN1 as part of a matched antibody pair:

MP00405-3: 82856-16-PBS capture and 82856-15-PBS detection (validated in Cytometric bead array)

MP00405-4: 82856-19-PBS capture and 82856-15-PBS detection (validated in Sandwich ELISA)

Unconjugated rabbit recombinant monoclonal antibody in PBS only (BSA and azide free) storage buffer at a concentration of 1 mg/mL, ready for conjugation. Created using Proteintech's proprietary in-house recombinant technology. Recombinant production enables unrivalled batch-to-batch consistency, easy scale-up, and future security of supply.

This conjugation ready format makes antibodies ideal for use in many applications including: ELISAs, multiplex assays requiring matched pairs, mass cytometry, and multiplex imaging applications. Antibody use should be optimized by the end user for each application and assay.

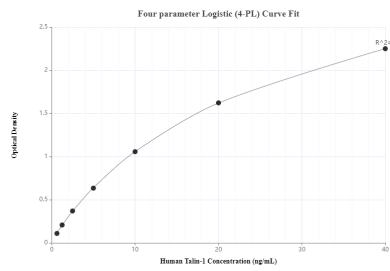
Storage

Storage:
Store at -80°C.
Storage Buffer:
PBS Only

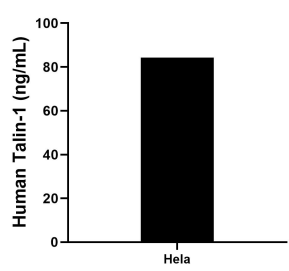
For technical support and original validation data for this product please contact:
T: 1 (888) 4PTGLAB (1-888-478-4522) (toll free in USA), or 1(312) 455-8498 (outside USA)
E: proteintech@ptglab.com
W: ptglab.com

This product is exclusively available under Proteintech Group brand and is not available to purchase from any other manufacturer.

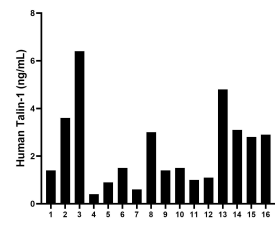
Selected Validation Data



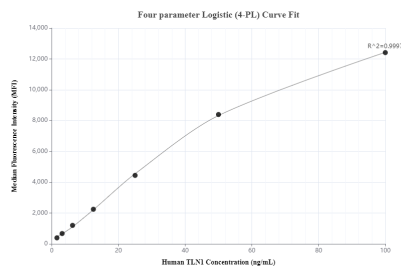
Sandwich ELISA standard curve of MP00405-4, human Talin-1 Recombinant Matched Antibody Pair - PBS only. 82856-19-PBS was coated to a plate as the capture antibody and incubated with serial dilutions of standard Ag5367. 82856-15-PBS was HRP conjugated as the detection antibody. Range: 0.625-40 ng/mL



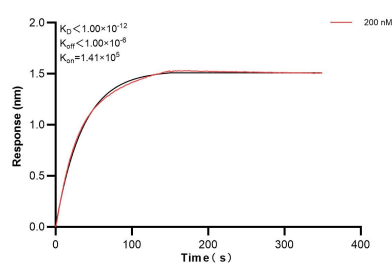
The mean Talin-1 concentration was determined to be 84.3 ng/mL in HeLa cell extract based on a 3.1 mg/mL extract load .



Serum of sixteen individual healthy human donors was measured. The Talin-1 concentration of detected samples was determined to be 2.3 ng/mL with a range of 0.4 - 6.4 ng/mL.



Cytometric bead array standard curve of MP00405-3, Talin-1 Recombinant Matched Antibody Pair, PBS Only. Capture antibody: 82856-16-PBS. Detection antibody: 82856-15-PBS. Standard: Ag5367. Range: 1.56-100 ng/mL



Biolayer interferometry (BLI) kinetic assay of 82856-15-PBS against Human TLN1 was performed. The affinity constant is below 1 pM.