

For Research Use Only

# Talin-1 Recombinant antibody

Catalog Number: 82856-4-RR



## Basic Information

<b>Catalog Number:</b> 82856-4-RR	<b>GenBank Accession Number:</b> BC042923	<b>Purification Method:</b> Protein A purification
<b>Size:</b> 100ul , Concentration: 1000 ug/ml by Nanodrop;	<b>GeneID (NCBI):</b> 7094	<b>CloneNo.:</b> 7D11
<b>Source:</b> Rabbit	<b>UNIPROT ID:</b> Q9Y490	<b>Recommended Dilutions:</b> WB 1:5000-1:50000 IHC 1:1000-1:4000 IF/ICC 1:500-1:2000
<b>Isotype:</b> IgG	<b>Full Name:</b> talin 1	
<b>Immunogen Catalog Number:</b> AG5367	<b>Calculated MW:</b> 2541 aa, 270 kDa	
	<b>Observed MW:</b> 270 kDa	

## Applications

<b>Tested Applications:</b> WB, IHC, IF/ICC, ELISA	<b>Positive Controls:</b>
<b>Species Specificity:</b> human, mouse, rat	<b>WB :</b> HeLa cells, HepG2 cells, Jurkat cells, K-562 cells, MCF-7 cells, NIH/3T3 cells, C6 cells
<b>Note-IHC: suggested antigen retrieval with TE buffer pH 9.0; (*) Alternatively, antigen retrieval may be performed with citrate buffer pH 6.0</b>	<b>IHC :</b> human colon tissue, mouse colon tissue
	<b>IF/ICC :</b> A549 cells, HUVEC cells

## Background Information

Talin-1 is a large cytoskeletal protein consisting of a globular head domain and a long rod comprised of a series of  $\alpha$ -helical bundles (PMID: 35266014). Talin-1 is ubiquitously expressed and is a major component of focal adhesions which are multi-protein, integrin-containing complexes, mediating cell migration, adhesion and integrin signalling (PMID: 33431906). Talin-1 also plays a role in tumor formation, migration and metastasis in various malignancies (PMID: 37013489).

## Storage

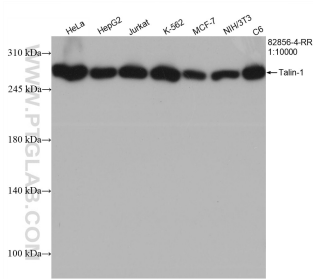
**Storage:**  
Store at -20°C. Stable for one year after shipment.  
**Storage Buffer:**  
PBS with 0.02% sodium azide and 50% glycerol pH 7.3.  
**Aliquoting is unnecessary for -20°C storage**

\*\*\* 20ul sizes contain 0.1% BSA

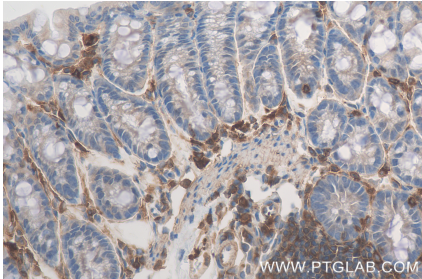
For technical support and original validation data for this product please contact:  
T: 1 (888) 4PTGLAB (1-888-478-4522) (toll free in USA), or 1(312) 455-8498 (outside USA)  
E: [proteintech@ptglab.com](mailto:proteintech@ptglab.com)  
W: [ptglab.com](http://ptglab.com)

This product is exclusively available under Proteintech Group brand and is not available to purchase from any other manufacturer.

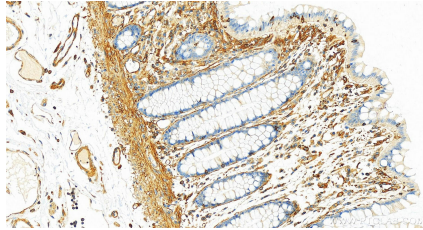
Selected Validation Data



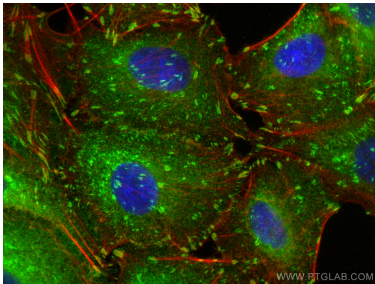
Various lysates were subjected to SDS PAGE followed by western blot with 82856-4-RR (Talin-1 antibody) at dilution of 1:10000 incubated at room temperature for 1.5 hours.



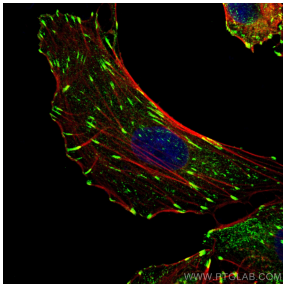
Immunohistochemical analysis of paraffin-embedded mouse colon tissue slide using 82856-4-RR (Talin-1 antibody) at dilution of 1:1000 (under 40x lens). Heat mediated antigen retrieval with Tris-EDTA buffer (pH 9.0).



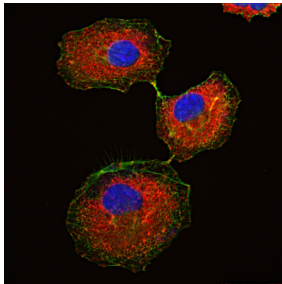
Immunohistochemical analysis of paraffin-embedded human colon tissue slide using 82856-4-RR (Talin-1 antibody) at dilution of 1:2000 (under 20x lens). Heat mediated antigen retrieval with Tris-EDTA buffer (pH 9.0).



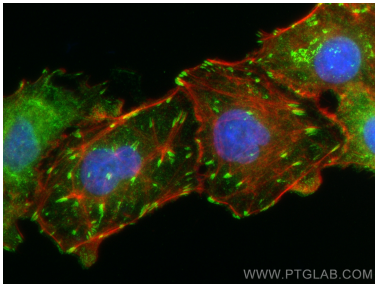
Immunofluorescent analysis of (4% PFA) fixed A549 cells using Talin-1 antibody (82856-4-RR, Clone: 7D11 ) at dilution of 1:1000 and CoraLite® 488-Conjugated AffiniPure Goat Anti-Rabbit IgG(H+L), CL594-Phalloidin (red).



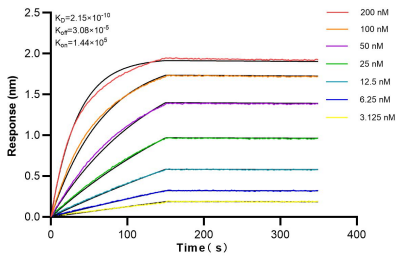
Immunofluorescent analysis of (4% PFA) fixed A549 cells using Talin-1 antibody (82856-4-RR, Clone: 7D11 ) at dilution of 1:200 and Multi-rAb CoraLite® Plus 488-Goat Anti-Rabbit Recombinant Secondary Antibody (H+L) (RGAR002), (CL594-Phalloidin, red).



Immunofluorescent analysis of (4% PFA) fixed A549 cells using Talin-1 antibody (82856-4-RR, Clone: 7D11 ) at dilution of 1:1200 and Multi-rAb CoraLite® Plus 594-Goat Anti-Rabbit Recombinant Secondary Antibody (H+L) (RGAR004).(CL488-Phalloidin, green).



Immunofluorescent analysis of (4% PFA) fixed A549 cells using Talin-1 antibody (82856-4-RR, Clone: 7D11 ) at dilution of 1:200 and Multi-rAb CoraLite® Plus 488-Goat Anti-Rabbit Recombinant Secondary Antibody (H+L) (RGAR002), CL594-phalloidin (red).



Biolayer interferometry (BLI) kinetic assays of 82856-4-RR against Human TLN1 were performed. The affinity constant is 0.215 nM.