

For Research Use Only

Mouse IL-15 Recombinant monoclonal antibody, PBS Only (Detector)

Catalog Number:82862-7-PBS



Basic Information

Catalog Number: 82862-7-PBS	GenBank Accession Number: NM_001254747	Purification Method: Protein A purification
Size: 100ug , Concentration: 1 mg/ml by Nanodrop;	GeneID (NCBI): 16168	CloneNo.: 251309C1
Source: Rabbit	UNIPROT ID: P48346	
Isotype: IgG	Full Name: interleukin 15	
Immunogen Catalog Number: EG2179	Calculated MW: 19 kDa	

Applications

Tested Applications:
Sandwich ELISA, Indirect ELISA

Species Specificity:
mouse

Product Information

82862-7-PBS targets IL-15 as part of a matched antibody pair:

MP03066-1: 82862-8-PBS capture and 82862-7-PBS detection (validated in Sandwich ELISA)

Unconjugated rabbit recombinant monoclonal antibody in PBS only (BSA and azide free) storage buffer at a concentration of 1 mg/mL, ready for conjugation. Created using Proteintech's proprietary in-house recombinant technology. Recombinant production enables unrivalled batch-to-batch consistency, easy scale-up, and future security of supply.

This conjugation ready format makes antibodies ideal for use in many applications including: ELISAs, multiplex assays requiring matched pairs, mass cytometry, and multiplex imaging applications. Antibody use should be optimized by the end user for each application and assay.

Storage

Storage:
Store at -80°C.

Storage Buffer:
PBS only, pH7.3

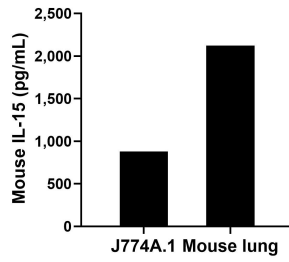
For technical support and original validation data for this product please contact:

T: 1 (888) 4PTGLAB (1-888-478-4522) (toll free in USA), or 1(312) 455-8498 (outside USA)

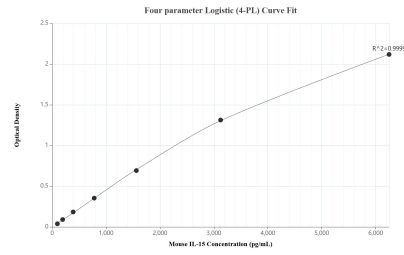
E: proteintech@ptglab.com
W: ptglab.com

This product is exclusively available under Proteintech Group brand and is not available to purchase from any other manufacturer.

Selected Validation Data



The mean IL-15 concentration was determined to be 878.90 pg/mL in J774A.1 cell extract based on a 1.2 mg/mL extract load and 2,122.0 pg/mL in mouse lung extract based on a 4.8 mg/mL extract load.



Sandwich ELISA standard curve of MP03066-1, IL-15 Recombinant Matched Antibody Pair - PBS only. 82862-8-PBS was coated to a plate as the capture antibody and incubated with serial dilutions of standard Eg2179. 82862-7-PBS was biotinylated as the detection antibody. Range: 97.7-6250 pg/mL.