

For Research Use Only

ZO-1 Recombinant antibody

Catalog Number: 82870-1-RR



Basic Information

Catalog Number: 82870-1-RR	GenBank Accession Number: BC111712	Purification Method: Protein A purification
Size: 100ul , Concentration: 1000 µg/ml by Nanodrop;	GeneID (NCBI): 7082	CloneNo.: 2P13
Source: Rabbit	UNIPROT ID: Q07157	Recommended Dilutions: WB 1:2000-1:10000 IP 0.5-4.0 ug for 1.0-3.0 mg of total protein lysate IF 1:750-1:3000
Isotype: IgG	Full Name: tight junction protein 1 (zona occludens 1)	
Immunogen Catalog Number: AG33182	Calculated MW: 1748 aa, 195 kDa	
	Observed MW: 230 kDa	

Applications

Tested Applications: IF, IP, WB, ELISA	Positive Controls:
Species Specificity: Human	WB : Caco-2 cells, MCF-7 cells, HeLa cells, HepG2 cells IP : HEK-293 cells, IF : MCF-7 cells,

Background Information

Tight junction (or zonula occludens) form the continuous intercellular barrier between epithelial and endothelial cells, which is required to separate tissue spaces and regulate selective movement of solutes across the epithelium and endothelium (PMID: 20066090). ZO-1 (also known as TJP1) is a peripheral membrane phosphoprotein located on the cytoplasmic face and is expressed in tight junctions of both epithelial and endothelial cells (PMID: 3528172). It binds the transmembrane proteins occludin and the claudins linking them to cytoskeletal actin (PMID: 17418867). ZO-1 belongs to a family of multidomain proteins known as the membrane-associated guanylate kinase homologs (MAGUKs). It is a pivotal tight junction protein and may be involved in signaling mechanisms regulating cell proliferation and differentiation (PMID: 22782886).

Storage

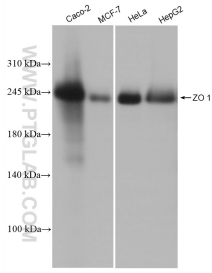
Storage:
Store at -20°C. Stable for one year after shipment.
Storage Buffer:
PBS with 0.02% sodium azide and 50% glycerol pH 7.3.
Aliquoting is unnecessary for -20°C storage

***** 20ul sizes contain 0.1% BSA**

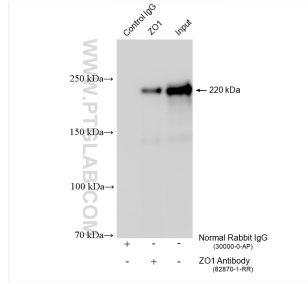
For technical support and original validation data for this product please contact:
T: 1 (888) 4PTGLAB (1-888-478-4522) (toll free in USA), or 1(312) 455-8498 (outside USA)
E: proteintech@ptglab.com
W: ptglab.com

This product is exclusively available under Proteintech Group brand and is not available to purchase from any other manufacturer.

Selected Validation Data



Various lysates were subjected to SDS PAGE followed by western blot with 82870-1-RR (ZO-1 antibody) at dilution of 1:5000 incubated at room temperature for 1.5 hours.



IP result of anti-ZO-1 (IP:82870-1-RR, 4ug; Detection:82870-1-RR 1:2000) with HEK-293 cells lysate 920 ug.



Immunofluorescent analysis of (4% PFA) fixed MCF-7 cells using ZO-1 antibody (82870-1-RR, Clone: 2P13) at dilution of 1:1500 and CoraLite®488-Conjugated AffiniPure Goat Anti-Rabbit IgG(H+L), Alpha Tubulin antibody (66031-1-Ig, Clone: 1E4C11, red).