

For Research Use Only

# SHPK Recombinant antibody, PBS Only



Catalog Number: 82875-1-PBS

## Basic Information

<b>Catalog Number:</b> 82875-1-PBS	<b>GenBank Accession Number:</b> BC020543	<b>Purification Method:</b> Protein A purification
<b>Size:</b> 100ug , Concentration: 1mg/ml by Nanodrop;	<b>GeneID (NCBI):</b> 23729	<b>CloneNo.:</b> 230115A4
<b>Source:</b> Rabbit	<b>UNIPROT ID:</b> Q9UHI6	
<b>Isotype:</b> IgG	<b>Full Name:</b> sedoheptulokinase	
<b>Immunogen Catalog Number:</b> AG33893	<b>Calculated MW:</b> 478 aa, 52 kDa	

## Applications

**Tested Applications:**  
Indirect ELISA, IF/ICC

**Species Specificity:**  
human

## Background Information

SHPK, also named CARKL, is a carbohydrate kinase involved in the phosphorylation of sugars as they enter a cell, inhibiting return across the cell membrane (PubMed: 10673275). SHPK is a sedoheptulose kinase of the pentose phosphate pathway. It acts as a modulator of macrophage activation through control of glucose metabolism (PMID: 22682222).

## Storage

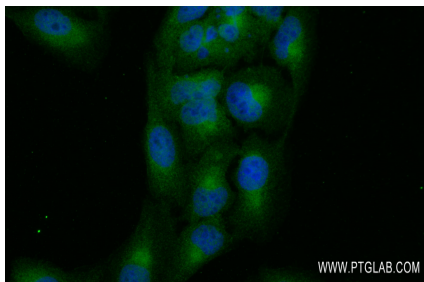
**Storage:**  
Store at -80°C.

**Storage Buffer:**  
PBS Only

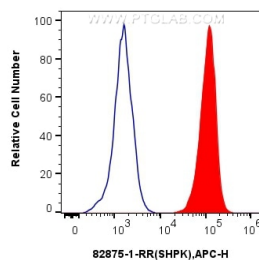
For technical support and original validation data for this product please contact:  
T: 1 (888) 4PTGLAB (1-888-478-4522) (toll free in USA), or 1(312) 455-8498 (outside USA)  
E: [proteintech@ptglab.com](mailto:proteintech@ptglab.com)  
W: [ptglab.com](http://ptglab.com)

This product is exclusively available under Proteintech Group brand and is not available to purchase from any other manufacturer.

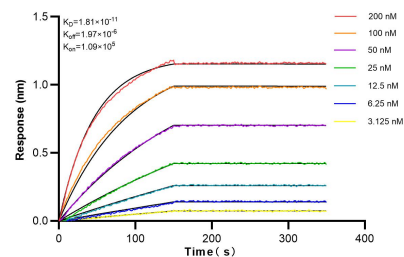
## Selected Validation Data



Immunofluorescent analysis of (-20°C Ethanol) fixed U2OS cells using SHPK antibody (82875-1-RR, Clone: 230115A4 ) at dilution of 1:300 and CoraLite®488-Conjugated AffiniPure Goat Anti-Rabbit IgG(H+L). This data was developed using the same antibody clone with 82875-1-PBS in a different storage buffer formulation.



$1 \times 10^6$  U-2 OS were intracellularly stained with 0.25  $\mu$ g Anti-Human SHPK (82875-1-RR, Clone:230115A4) and APC-Conjugated AffiniPure Goat Anti-Rabbit IgG(H+L) at dilution 1:166(red), or 0.25  $\mu$ g Rabbit IgG control Rabbit PolyAb (30000-O-AP). Cells were fixed and permeabilized with True-Nuclear Transcription Factor Buffer Set. This data was developed using the same antibody clone with 82875-1-PBS in a different storage buffer formulation.



Biolayer interferometry (BLI) kinetic assays of 82875-1-RR against Human SHPK were performed. The affinity constant is 18.1 pM.