

For Research Use Only

# SAGE1 Recombinant antibody, PBS Only

Catalog Number: 82876-1-PBS



## Basic Information

Catalog Number:

82876-1-PBS

Size:

100ug, Concentration: 1mg/ml by Nanodrop;

Source:

Rabbit

Isotype:

IgG

Immunogen Catalog Number:

AG34216

GenBank Accession Number:

NM\_018666.2

GeneID (NCBI):

55511

UNIPROT ID:

Q9NXZ1

Full Name:

sarcoma antigen 1

Calculated MW:

99kd

Purification Method:

Protein A purification

CloneNo.:

230094C11

## Applications

Tested Applications:

IF/ICC, FC (Intra), Indirect ELISA

Species Specificity:

Human

## Background Information

Sarcoma antigen 1 (SAGE1) is a cancer/testis antigen that is limited to the spermatogonia and pre-meiotic spermatocytes and localized to the nuclei (PMID: 34465596).

## Storage

Storage:

Store at -80°C.

Storage Buffer:

PBS Only

For technical support and original validation data for this product please contact:

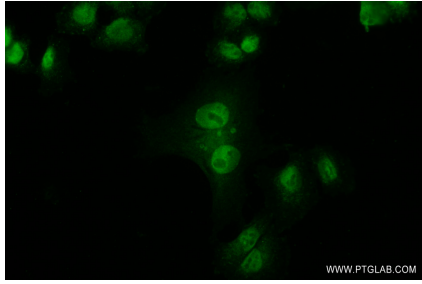
T: 1 (888) 4PTGLAB (1-888-478-4522) (toll free in USA), or 1(312) 455-8498 (outside USA)

E: [proteintech@ptglab.com](mailto:proteintech@ptglab.com)

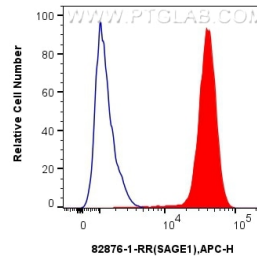
W: [ptglab.com](http://ptglab.com)

This product is exclusively available under Proteintech Group brand and is not available to purchase from any other manufacturer.

## Selected Validation Data



Immunofluorescent analysis of (4% PFA) fixed MDA-MB-453 cells using SAGE1 antibody (82876-1-RR, Clone: 230094C11) at dilution of 1:400 and CoraLite®488-Conjugated Goat Anti-Rabbit IgG(H+L). This data was developed using the same antibody clone with 82876-1-PBS in a different storage buffer formulation.



1x10<sup>6</sup> U2OS cells were intracellularly stained with 0.25 ug Anti-Human SAGE1 (82876-1-RR, Clone:230094C11) and APC-Conjugated Goat Anti-Rabbit IgG(H+L) at dilution 1:166(red), or 0.25 ug Rabbit IgG control Rabbit PolyAb (30000-O-AP) (blue) . Cells were fixed and permeabilized with True-Nuclear Transcription Factor Buffer Set. This data was developed using the same antibody clone with 82876-1-PBS in a different storage buffer formulation.