

For Research Use Only

# SAGE1 Recombinant antibody

Catalog Number: 82876-1-RR



## Basic Information

Catalog Number:

82876-1-RR

Size:

100ul, Concentration: 1000 ug/ml by

Nanodrop;

Source:

Rabbit

Isotype:

IgG

Immunogen Catalog Number:

AG34216

GenBank Accession Number:

NM\_018666.2

GeneID (NCBI):

55511

UNIPROT ID:

Q9NXZ1

Full Name:

sarcoma antigen 1

Calculated MW:

99kd

Purification Method:

Protein A purification

CloneNo.:

230094C11

Recommended Dilutions:

IF/ICC: 1:200-1:800

FC (Intra): 0.25 ug per 10<sup>6</sup> cells in a  
100 µl suspension

## Applications

Tested Applications:

IF/ICC, FC (Intra), ELISA

Species Specificity:

human

Positive Controls:

IF/ICC : MDA-MB-453 cells,

FC (Intra) : U2OS cells,

## Background Information

Sarcoma antigen 1 (SAGE1) is a cancer/testis antigen that is limited to the spermatogonia and pre-meiotic spermatocytes and localized to the nuclei (PMID: 34465596).

## Storage

Storage:

Store at -20°C. Stable for one year after shipment.

Storage Buffer:

PBS with 0.02% sodium azide and 50% glycerol, pH7.3

Aliquoting is unnecessary for -20°C storage

\*\*\* 20ul sizes contain 0.1% BSA

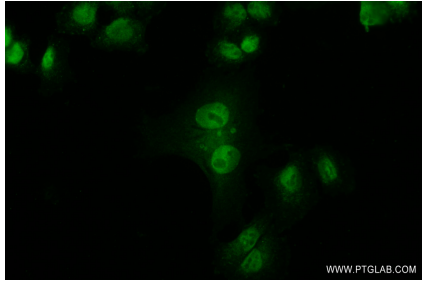
For technical support and original validation data for this product please contact:

T: 1 (888) 4PTGLAB (1-888-478-4522) (toll free  
in USA), or 1(312) 455-8498 (outside USA)

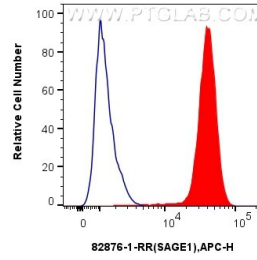
E: [proteintech@ptglab.com](mailto:proteintech@ptglab.com)  
W: [ptglab.com](http://ptglab.com)

This product is exclusively available under Proteintech Group brand and is not available to purchase from any other manufacturer.

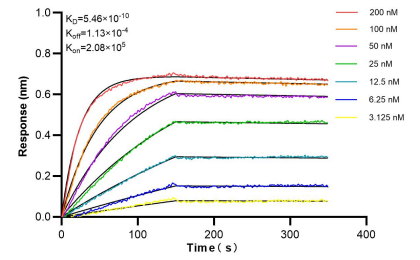
## Selected Validation Data



Immunofluorescent analysis of (4% PFA) fixed MDA-MB-453 cells using SAGE1 antibody (82876-1-RR, Clone: 230094C11) at dilution of 1:400 and CoraLite®488-Conjugated AffiniPure Goat Anti-Rabbit IgG(H+L).



$1 \times 10^6$  U2OS cells were intracellularly stained with 0.25  $\mu$ g Anti-Human SAGE1 (82876-1-RR, Clone: 230094C11) and APC-Conjugated AffiniPure Goat Anti-Rabbit IgG(H+L) at dilution 1:166(red), or 0.25  $\mu$ g Rabbit IgG control Rabbit PolyAb (30000-O-AP)(blue). Cells were fixed and permeabilized with True-Nuclear Transcription Factor Buffer Set.



Biolayer interferometry (BLI) kinetic assays of 82876-1-RR against Human SAGE1 were performed. The affinity constant is 0.546 nM.