

For Research Use Only

IFT88 Recombinant antibody

Catalog Number: 82886-1-RR



Basic Information

Catalog Number:	82886-1-RR	GenBank Accession Number:	BC030776	Purification Method:	Protein A purification
Size:	100ul , Concentration: 1000 ug/ml by Nanodrop;	GeneID (NCBI):	8100	CloneNo.:	230074F8
Source:	Rabbit	UNIPROT ID:	Q13099	Recommended Dilutions:	WB 1:2000-1:10000 IHC 1:250-1:1000
Isotype:	IgG	Full Name:	intraflagellar transport 88 homolog (Chlamydomonas)		
Immunogen Catalog Number:	AG4980	Calculated MW:	94 kDa		
		Observed MW:	88-95 kDa		

Applications

Tested Applications:	WB, IHC, ELISA	Positive Controls:	
Species Specificity:	human, mouse, rat	WB :	HEK-293 cells, NIH/3T3 cells, human testis tissue, mouse testis tissue, rat testis tissue
Note-IHC:	suggested antigen retrieval with TE buffer pH 9.0; (*) Alternatively, antigen retrieval may be performed with citrate buffer pH 6.0	IHC :	mouse heart tissue,

Background Information

Intraflagellar transport (IFT), mediated by molecular motors and IFT particles, is an important transport process that occurs in the cilium and has been shown to be essential for the assembly and maintenance of cilia and flagella in many organisms. IFT88 (intraflagellar transport protein 88; also known as TG737 or TTC10) is a component of IFT particles and required for cilium biogenesis. Defects in IFT88/Tg737 lead to polycystic kidney disease (11062270). IFT88 localizes to spindle poles during mitosis and is required for spindle orientation in mitosis (21441926).

Storage

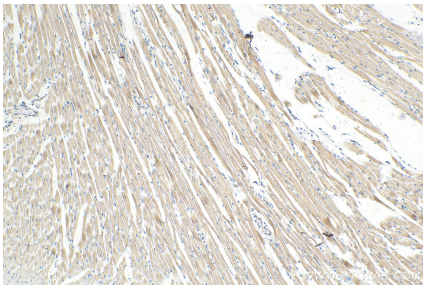
Storage:
Store at -20°C. Stable for one year after shipment.
Storage Buffer:
PBS with 0.02% sodium azide and 50% glycerol pH 7.3.
Aliquoting is unnecessary for -20°C storage

*** 20ul sizes contain 0.1% BSA

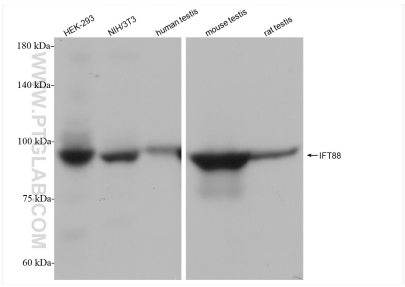
For technical support and original validation data for this product please contact:
T: 1 (888) 4PTGLAB (1-888-478-4522) (toll free in USA), or 1(312) 455-8498 (outside USA)
E: proteintech@ptglab.com
W: ptglab.com

This product is exclusively available under Proteintech Group brand and is not available to purchase from any other manufacturer.

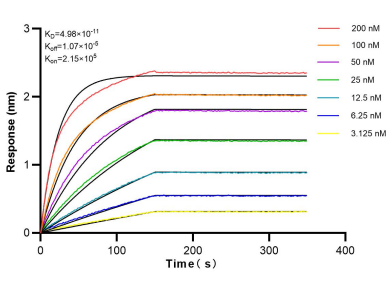
Selected Validation Data



Immunohistochemical analysis of paraffin-embedded mouse heart tissue slide using 82886-1-RR (IFT88 antibody) at dilution of 1:500 (under 10x lens). Heat mediated antigen retrieval with Tris-EDTA buffer (pH 9.0).



Various lysates were subjected to SDS PAGE followed by western blot with 82886-1-RR (IFT88 antibody) at dilution of 1:5000 incubated at room temperature for 1.5 hours.



Biolayer interferometry (BLI) kinetic assays of 82886-1-RR against Human IFT88 were performed. The affinity constant is 49.8 pM.