

For Research Use Only

# IFT88 Recombinant antibody

Catalog Number: 82886-2-RR



## Basic Information

<b>Catalog Number:</b> 82886-2-RR	<b>GenBank Accession Number:</b> BC030776	<b>Purification Method:</b> Protein A purification
<b>Size:</b> 100ul , Concentration: 1000 ug/ml by Nanodrop;	<b>GeneID (NCBI):</b> 8100	<b>CloneNo.:</b> 230074E12
<b>Source:</b> Rabbit	<b>UNIPROT ID:</b> Q13099	<b>Recommended Dilutions:</b> WB 1:5000-1:50000 IF/ICC 1:200-1:800
<b>Isotype:</b> IgG	<b>Full Name:</b> intraflagellar transport 88 homolog (Chlamydomonas)	
<b>Immunogen Catalog Number:</b> AG4980	<b>Calculated MW:</b> 94 kDa	
	<b>Observed MW:</b> 88-95 kDa	

## Applications

<b>Tested Applications:</b> WB, IF/ICC, ELISA	<b>Positive Controls:</b>
<b>Species Specificity:</b> human	<b>WB :</b> HEK-293 cells, A549 cells, PC-3 cells <b>IF/ICC :</b> Starvation treated hTERT-RPE1 cells,

## Background Information

Intraflagellar transport (IFT), mediated by molecular motors and IFT particles, is an important transport process that occurs in the cilium and has been shown to be essential for the assembly and maintenance of cilia and flagella in many organisms. IFT88 (intraflagellar transport protein 88; also known as TG737 or TTC10) is a component of IFT particles and required for cilium biogenesis. Defects in IFT88/TG737 lead to polycystic kidney disease (11062270). IFT88 localizes to spindle poles during mitosis and is required for spindle orientation in mitosis (21441926).

## Storage

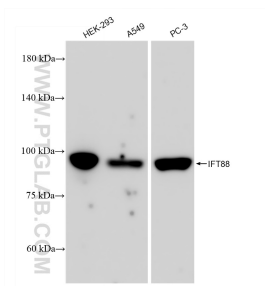
**Storage:**  
Store at -20°C. Stable for one year after shipment.  
**Storage Buffer:**  
PBS with 0.02% sodium azide and 50% glycerol pH 7.3.  
**Aliquoting is unnecessary for -20°C storage**

\*\*\* 20ul sizes contain 0.1% BSA

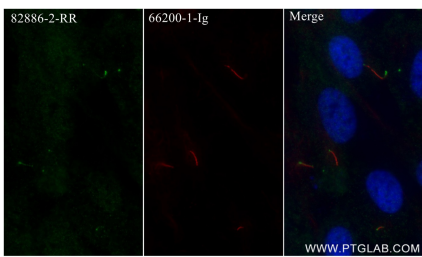
For technical support and original validation data for this product please contact:  
T: 1 (888) 4PTGLAB (1-888-478-4522) (toll free in USA), or 1(312) 455-8498 (outside USA)  
E: [proteintech@ptglab.com](mailto:proteintech@ptglab.com)  
W: [ptglab.com](http://ptglab.com)

This product is exclusively available under Proteintech Group brand and is not available to purchase from any other manufacturer.

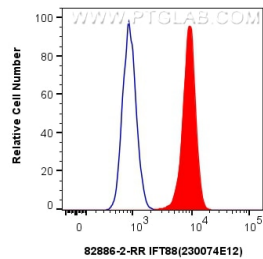
Selected Validation Data



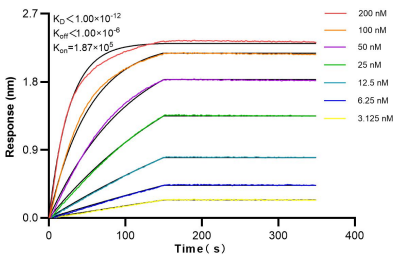
Various lysates were subjected to SDS PAGE followed by western blot with 82886-2-RR (IFT88 antibody) at dilution of 1:10000 incubated at room temperature for 1.5 hours.



Immunofluorescent analysis of (4% PFA) fixed Starvation treated hTERT-RPE1 cells using IFT88 antibody (82886-2-RR, Clone: 230074E12 ) at dilution of 1:400 and CoraLite®488-Conjugated AffiniPure Goat Anti-Rabbit IgG(H+L) (SA00013-2), Acetyl-Tubulin (Lys40) antibody (66200-1-Ig, Clone: 7E5H8, red).



1x10<sup>6</sup> HEK-293 cells were intracellularly stained with 0.25 ug IFT88 Recombinant antibody (82886-2-RR, Clone:230074E12) and CoraLite®488-Conjugated Goat Anti-Rabbit IgG(H+L) (SA00013-2) (red), or 0.25 ug Rabbit IgG Isotype Control Recombinant Antibody (98136-1-RR, Clone: 240953C9) (blue). Cells were fixed with 4% PFA and permeabilized with Flow Cytometry Perm Buffer (PF00011-C).



Biolayer interferometry (BLI) kinetic assays of 82886-2-RR against Human IFT88 were performed. The affinity constant is below 1 pM.