

For Research Use Only

Emerin Recombinant antibody

Catalog Number: 82888-2-RR



Basic Information

Catalog Number: 82888-2-RR	GenBank Accession Number: BC000738	Purification Method: Protein A purification
Size: 100ul , Concentration: 1000 ug/ml by Nanodrop;	GeneID (NCBI): 2010	CloneNo.: 230089C4
Source: Rabbit	UNIPROT ID: P50402	Recommended Dilutions: IHC 1:200-1:800 IF/ICC 1:150-1:600
Isotype: IgG	Full Name: emerin	
Immunogen Catalog Number: AG0236	Calculated MW: 34 kDa	

Applications

Tested Applications: IHC, IF/ICC, FC (Intra), ELISA	Positive Controls:
Species Specificity: human	IHC : human thyroid cancer tissue, IF/ICC : HeLa cells,
Note-IHC: suggested antigen retrieval with TE buffer pH 9.0; (*) Alternatively, antigen retrieval may be performed with citrate buffer pH 6.0	

Storage

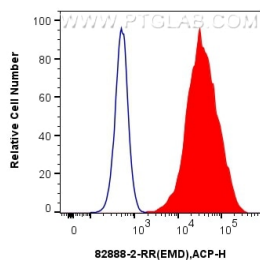
Storage: Store at -20°C. Stable for one year after shipment.
Storage Buffer: PBS with 0.02% sodium azide and 50% glycerol pH 7.3.
Aliquoting is unnecessary for -20° C storage

*** 20ul sizes contain 0.1% BSA

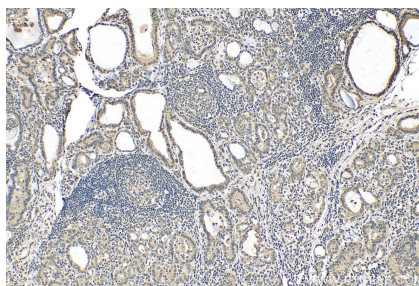
For technical support and original validation data for this product please contact:
T: 1 (888) 4PTGLAB (1-888-478-4522) (toll free in USA), or 1(312) 455-8498 (outside USA)
E: proteintech@ptglab.com
W: ptglab.com

This product is exclusively available under Proteintech Group brand and is not available to purchase from any other manufacturer.

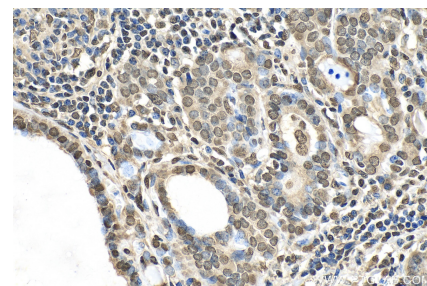
Selected Validation Data



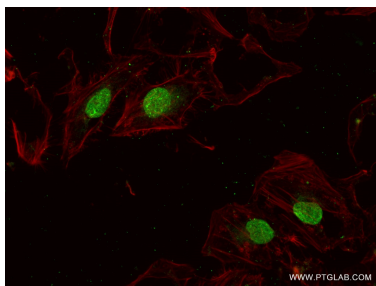
1x10⁶ HeLa cells were intracellularly stained with 0.13 ug Anti-Human Emerin (82888-2-RR, Clone:230089C4) and APC-Conjugated Goat Anti-Rabbit IgG(H+L) at dilution 1:166 (red), or 0.13 ug Rabbit IgG control Rabbit PolyAb (30000-O-AP, Clone:) (blue). Cells were fixed with 4% PFA and permeabilized with Flow Cytometry Perm Buffer (PF00011-C).



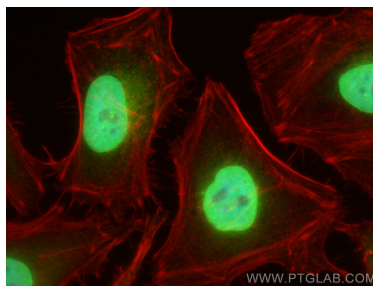
Immunohistochemical analysis of paraffin-embedded human thyroid cancer tissue slide using 82888-2-RR (Emerin antibody) at dilution of 1:400 (under 10x lens). Heat mediated antigen retrieval with Tris-EDTA buffer (pH 9.0).



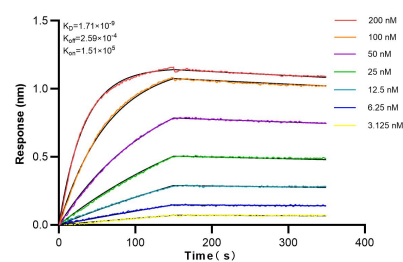
Immunohistochemical analysis of paraffin-embedded human thyroid cancer tissue slide using 82888-2-RR (Emerin antibody) at dilution of 1:400 (under 40x lens). Heat mediated antigen retrieval with Tris-EDTA buffer (pH 9.0).



Immunofluorescent analysis of (4% PFA) fixed HeLa cells using Emerin antibody (82888-2-RR, Clone: 230089C4) at dilution of 1:300 and CoraLite®488-Conjugated Goat Anti-Rabbit IgG(H+L) (SA00013-2), CL594-Phalloidin (red).



Immunofluorescent analysis of (4% PFA) fixed HeLa cells using Emerin antibody (82888-2-RR, Clone: 230089C4) at dilution of 1:800 and Multi-rAb CoraLite® Plus 488-Goat Anti-Rabbit Recombinant Secondary Antibody (H+L) (RGAR002), CL594-phalloidin (red).



Bi-layer interferometry (BLI) kinetic assays of 82888-2-RR against Human Emerin were performed. The affinity constant is 1.71 nM.