

For Research Use Only

RRBP1 Recombinant antibody

Catalog Number: 82890-1-RR



Basic Information

Catalog Number: 82890-1-RR	GenBank Accession Number: BC128577	Purification Method: Protein A purification
Size: 100ul , Concentration: 1000 ug/ml by Nanodrop;	GeneID (NCBI): 6238	CloneNo.: 230159G6
Source: Rabbit	UNIPROT ID: Q9P2E9	Recommended Dilutions: IF/ICC 1:500-1:2000
Isotype: IgG	Full Name: ribosome binding protein 1 homolog 180kDa (dog)	
Immunogen Catalog Number: AG16648	Calculated MW: 1410 aa, 152 kDa	
	Observed MW: 108 kDa, 152 kDa	

Applications

Tested Applications: IF/ICC, FC (Intra), ELISA	Positive Controls: IF/ICC : NIH/3T3 cells, HeLa cells
Species Specificity: human, mouse	

Background Information

Ribosome-binding protein 1 (RRBP1) is an endoplasmic reticulum membrane protein. It is a 1410 amino acid protein composed of a hydrophobic NH2-terminus that includes a transmembrane domain, a highly conserved tandem repeat (ribosome-binding domain), and an acidic coiled-coil COOH-terminal domain. RRBP1 acts as a ribosome receptor and mediates interaction between the ribosome and the endoplasmic reticulum membrane. It is also involved in early cardiac morphogenesis. (PMID: 22709790; 8812507; 7686155)

Storage

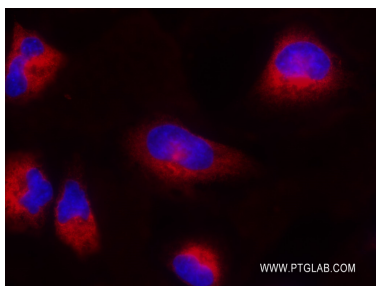
Storage:
Store at -20°C. Stable for one year after shipment.
Storage Buffer:
PBS with 0.02% sodium azide and 50% glycerol pH 7.3.
Aliquoting is unnecessary for -20°C storage

*** 20ul sizes contain 0.1% BSA

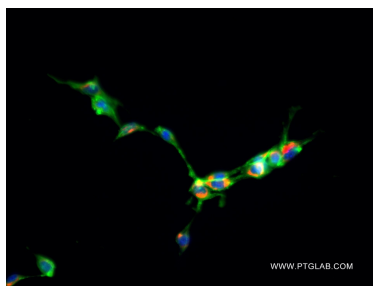
For technical support and original validation data for this product please contact:
T: 1 (888) 4PTGLAB (1-888-478-4522) (toll free in USA), or 1(312) 455-8498 (outside USA)
E: proteintech@ptglab.com
W: ptglab.com

This product is exclusively available under Proteintech Group brand and is not available to purchase from any other manufacturer.

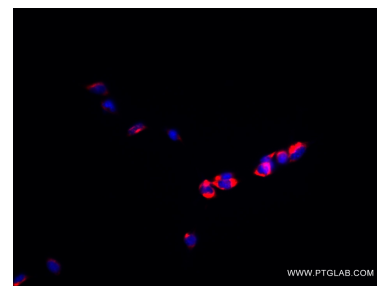
Selected Validation Data



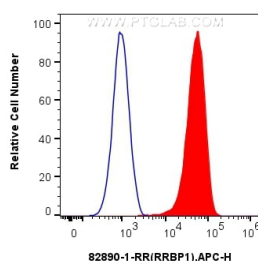
Immunofluorescent analysis of (4% PFA) fixed HeLa cells using RRBP1 antibody (82890-1-RR, Clone: 230159G6) at dilution of 1:1000 and Multi-rAb CoraLite® Plus 594-Goat Anti-Mouse Recombinant Secondary Antibody (H+L) (RGAM004).



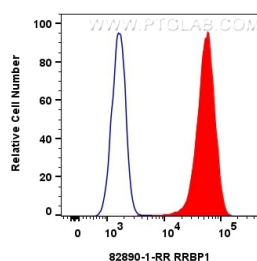
Immunofluorescent analysis of (4% PFA) fixed NIH/3T3 cells using RRBP1 antibody (82890-1-RR, Clone: 230159G6) at dilution of 1:1000 and Multi-rAb CoraLite® Plus 594-Goat Anti-Mouse Recombinant Secondary Antibody (H+L) (RGAM004). (CL488-Phalloidin, green).



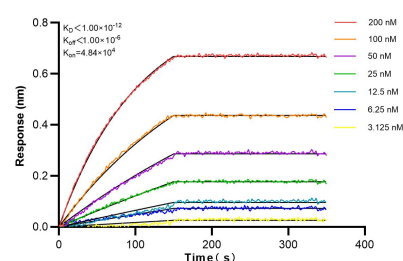
Immunofluorescent analysis of (4% PFA) fixed NIH/3T3 cells using RRBP1 antibody (82890-1-RR, Clone: 230159G6) at dilution of 1:1000 and Multi-rAb CoraLite® Plus 594-Goat Anti-Mouse Recombinant Secondary Antibody (H+L) (RGAM004).



(blue) 1×10^6 U-2 OS were intracellularly stained with 0.25 μ g Anti-Human RRBP1 (82890-1-RR, Clone: 230159G6) and Alexa Fluor™ Plus 647-Conjugated Goat Anti-Rabbit IgG(H+L) at dilution 1:166 (red), or 0.25 μ g Rabbit IgG control Rabbit PolyAb (30000-O-AP). Cells were fixed with 4% PFA and permeabilized with Flow Cytometry Perm Buffer (PF00011-C).



1×10^6 HeLa cells were intracellularly stained with 0.25 μ g RRBP1 Recombinant antibody (82890-1-RR, Clone: 230159G6) and CoraLite® 488-Conjugated Goat Anti-Rabbit IgG(H+L) (SA00013-2) (red), or 0.25 μ g Isotype Control (blue). Cells were fixed with 4% PFA and permeabilized with Flow Cytometry Perm Buffer (PF00011-C).



Biolayer interferometry (BLI) kinetic assays of 82890-1-RR against Human RRBP1 were performed. The affinity constant is below 1 pM.