

For Research Use Only

RRBP1 Recombinant antibody, PBS Only

Catalog Number: 82890-2-PBS



Basic Information

Catalog Number:

82890-2-PBS

Size:

100ug , Concentration: 1mg/ml by Nanodrop;

Source:

Rabbit

Isotype:

IgG

Immunogen Catalog Number:

AG16648

GenBank Accession Number:

BC128577

GeneID (NCBI):

6238

UNIPROT ID:

Q9P2E9

Full Name:

ribosome binding protein 1 homolog
180kDa (dog)

Calculated MW:

1410 aa, 152 kDa

Observed MW:

108 kDa, 152 kDa

Purification Method:

Protein A purification

CloneNo.:

230159G12

Applications

Tested Applications:

IHC, IF/ICC, FC (Intra), ELISA

Species Specificity:

human

Background Information

Ribosome-binding protein 1 (RRBP1) is an endoplasmic reticulum membrane protein. It is a 1410 amino acid protein composed of a hydrophobic NH2-terminus that includes a transmembrane domain, a highly conserved tandem repeat (ribosome-binding domain), and an acidic coiled-coil COOH-terminal domain. RRBP1 acts as a ribosome receptor and mediates interaction between the ribosome and the endoplasmic reticulum membrane. It is also involved in early cardiac morphogenesis. (PMID: 22709790; 8812507; 7686155)

Storage

Storage:

Store at -80°C.

Storage Buffer:

PBS Only

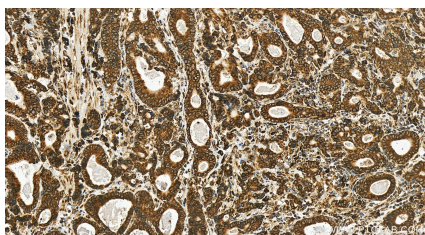
For technical support and original validation data for this product please contact:

T: 1 (888) 4PTGLAB (1-888-478-4522) (toll free
in USA), or 1(312) 455-8498 (outside USA)

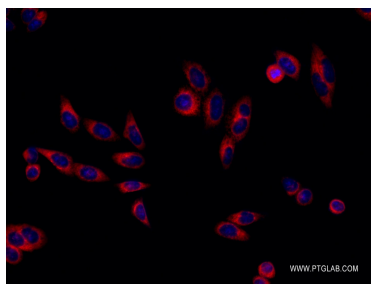
E: proteintech@ptglab.com
W: ptglab.com

This product is exclusively available under Proteintech Group brand and is not available to purchase from any other manufacturer.

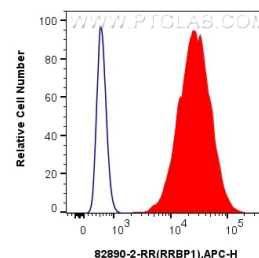
Selected Validation Data



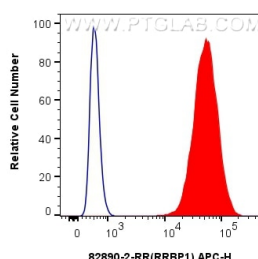
Immunohistochemical analysis of paraffin-embedded human stomach cancer tissue slide using 82890-2-RR (RRBP1 antibody) at dilution of 1:500 (under 20x lens). Heat mediated antigen retrieval with Tris-EDTA buffer(pH9). This data was developed using the same antibody clone with 82890-2-PBS in a different storage buffer formulation.



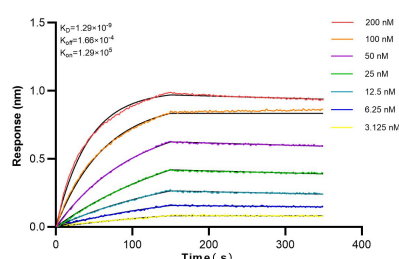
Immunofluorescent analysis of (-20°C Methanol) fixed HepG2 cells using RRBP1 antibody (82890-2-RR, Clone: 230159G12) at dilution of 1:500 and Multi-rAb CoraLite® Plus 594-Goat Anti-Rabbit Recombinant Secondary Antibody (H+L) (RGAR004). This data was developed using the same antibody clone with 82890-2-PBS in a different storage buffer formulation.



1×10^6 A549 cells were intracellularly stained with 0.25 ug Anti-Human RRBP1 (82890-2-RR, Clone:230159G12) and APC-Conjugated AffiniPure Goat Anti-Rabbit IgG(H+L)(red), or 0.25 ug Rabbit IgG control Rabbit PolyAb (30000-O-AP) (blue). Cells were fixed with 4% PFA and permeabilized with Flow Cytometry Perm Buffer (PF00011-C). This data was developed using the same antibody clone with 82890-2-PBS in a different storage buffer formulation.



1×10^6 U2OS cells were intracellularly stained with 0.25 ug Anti-Human RRBP1 (82890-2-RR, Clone:230159G12) and APC-Conjugated AffiniPure Goat Anti-Rabbit IgG(H+L)(red), or 0.25 ug Rabbit IgG control Rabbit PolyAb (30000-O-AP) (blue). Cells were fixed with 4% PFA and permeabilized with Flow Cytometry Perm Buffer (PF00011-C). This data was developed using the same antibody clone with 82890-2-PBS in a different storage buffer formulation.



Biolayer interferometry (BLI) kinetic assays of 82890-2-RR against Human RRBP1 were performed. The affinity constant is 1.29 nM.