

For Research Use Only

# MELK Recombinant antibody, PBS Only

Catalog Number: 82893-1-PBS



## Basic Information

**Catalog Number:**

82893-1-PBS

**Size:**

100ug, Concentration: 1 mg/ml by Nanodrop;

**Source:**

Rabbit

**Isotype:**

IgG

**Immunogen Catalog Number:**

AG1897

**GenBank Accession Number:**

BC014039

**GeneID (NCBI):**

9833

**UNIPROT ID:**

Q14680

**Full Name:**

maternal embryonic leucine zipper kinase

**Calculated MW:**

651 aa, 75 kDa

**Purification Method:**

Protein A purification

**CloneNo.:**

230106D4

## Applications

**Tested Applications:**

FC (Intra), Indirect ELISA

**Species Specificity:**

human

## Background Information

MELK is involved in various processes such as cell cycle regulation, self-renewal of stem cells, apoptosis and splicing regulation. It also plays a key role in cell proliferation and carcinogenesis, and it is required for proliferation of embryonic and postnatal multipotent neural progenitors.

## Storage

**Storage:**

Store at -80°C.

**Storage Buffer:**

PBS Only

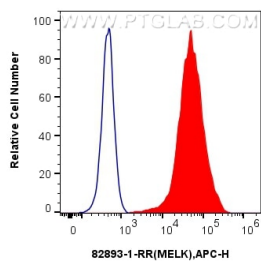
For technical support and original validation data for this product please contact:

T: 1 (888) 4PTGLAB (1-888-478-4522) (toll free in USA), or 1(312) 455-8498 (outside USA)

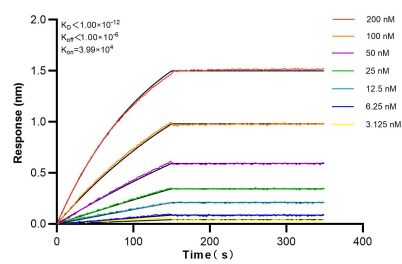
E: [proteintech@ptglab.com](mailto:proteintech@ptglab.com)  
W: [ptglab.com](http://ptglab.com)

This product is exclusively available under Proteintech Group brand and is not available to purchase from any other manufacturer.

Selected Validation Data



1x10<sup>6</sup> MCF-7 cells were intracellularly stained with 0.5 ug Anti-Human MELK (82893-1-RR, Clone:230106D4) and APC-Conjugated AffiniPure Goat Anti-Rabbit IgG(H+L) at dilution 1:166 (red), or 0.5 ug Rabbit IgG control Rabbit PolyAb (30000-0-AP, Clone: ) (blue). Cells were fixed with 4% PFA and permeabilized with Flow Cytometry Perm Buffer (PF00011-C). This data was developed using the same antibody clone with 82893-1-PBS in a different storage



Biolayer interferometry (BLI) kinetic assays of 82893-1-RR against Human MELK were performed. The affinity constant is below 1 pM.