

For Research Use Only

MELK Recombinant antibody, PBS Only (Capture/Detector)

Catalog Number: 82893-2-PBS

Featured Product



Basic Information

Catalog Number:

82893-2-PBS

Size:

100ug, Concentration: 1mg/ml by Nanodrop;

Source:

Rabbit

Isotype:

IgG

Immunogen Catalog Number:

AG1897

GenBank Accession Number:

BC014039

GeneID (NCBI):

9833

UNIPROT ID:

Q14680

Full Name:

maternal embryonic leucine zipper kinase

Calculated MW:

651 aa, 75 kDa

Observed MW:

50-70 kDa

Purification Method:

Protein A purification

CloneNo.:

230106A4

Applications

Tested Applications:

WB, IHC, Cytometric bead array, Sandwich ELISA, Indirect ELISA, Sample test

Species Specificity:

human, mouse

Product Information

82893-2-PBS targets MELK as part of a matched antibody pair.

MP00075-1: 82893-2-PBS capture and 82893-3-PBS detection (validated in Cytometric bead array)

MP00075-2: 82893-4-PBS capture and 82893-2-PBS detection (validated in Cytometric bead array)

MP00075-4: 82893-2-PBS capture and 82893-6-PBS detection (validated in Sandwich ELISA)

Unconjugated rabbit recombinant monoclonal antibody in PBS only (BSA and azide free) storage buffer at a concentration of 1 mg/mL, ready for conjugation. Created using Proteintech's proprietary in-house recombinant technology. Recombinant production enables unrivalled batch-to-batch consistency, easy scale-up, and future security of supply.

This conjugation ready format makes antibodies ideal for use in many applications including: ELISAs, multiplex assays requiring matched pairs, mass cytometry, and multiplex imaging applications. Antibody use should be optimized by the end user for each application and assay.

Background Information

MELK is involved in various processes such as cell cycle regulation, self-renewal of stem cells, apoptosis and splicing regulation. It also plays a key role in cell proliferation and carcinogenesis, and it is required for proliferation of embryonic and postnatal multipotent neural progenitors.

Storage

Storage:

Store at -80°C.

Storage Buffer:

100% PBS pH 7.3

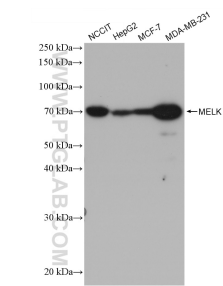
For technical support and original validation data for this product please contact:

T: 1 (888) 4PTGLAB (1-888-478-4522) (toll free in USA), or 1(312) 455-8498 (outside USA)

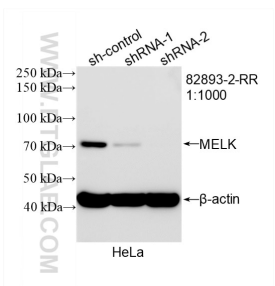
E: proteintech@ptglab.com
W: ptglab.com

This product is exclusively available under Proteintech Group brand and is not available to purchase from any other manufacturer.

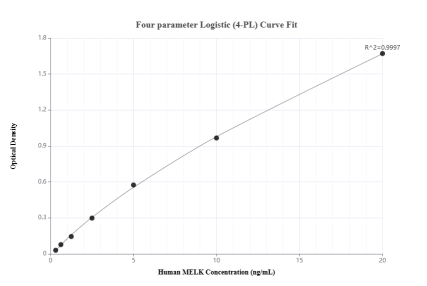
Selected Validation Data



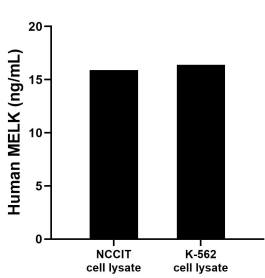
Various lysates were subjected to SDS PAGE followed by western blot with 82893-2-RR (MELK antibody) at dilution of 1:5000 incubated at room temperature for 1.5 hours. This data was developed using the same antibody clone with 82893-2-PBS in a different storage buffer formulation.



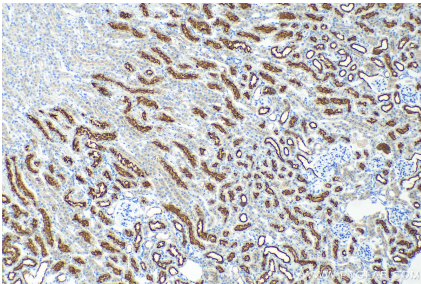
WB result of MELK antibody (82893-2-RR; 1:1000; incubated at room temperature for 1.5 hours) with sh-Control and sh-MELK transfected HeLa cells. This data was developed using the same antibody clone with 82893-2-PBS in a different storage buffer formulation.



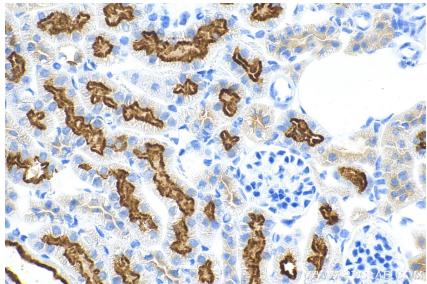
Sandwich ELISA standard curve of MP00075-4, Human MELK Recombinant Matched Antibody Pair - PBS only. 82893-2-PBS was coated to a plate as the capture antibody and incubated with serial dilutions of standard Ag1897. 82893-6-PBS was HRP conjugated as the detection antibody. Range: 0.313-20 ng/mL



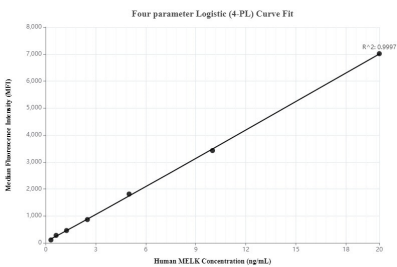
NCCIT and K-562 cell lysate were measured. The human MELK concentration of detected samples was determined to be 15.9 ng/mL (based on a 4.5 mg/mL extract load) in NCCIT cell lysate and 16.4 ng/mL (based on a 4.5 mg/mL extract load) in K-562 cell lysate.



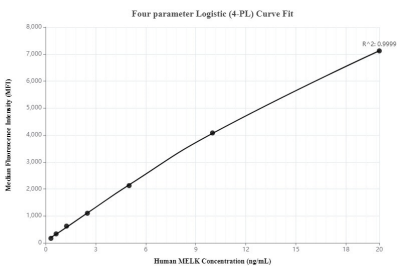
Immunohistochemical analysis of paraffin-embedded mouse kidney tissue slide using 82893-2-RR (MELK antibody) at dilution of 1:200 (under 10x lens). Heat mediated antigen retrieval with Tris-EDTA buffer (pH 9.0). This data was developed using the same antibody clone with 82893-2-PBS in a different storage buffer formulation.



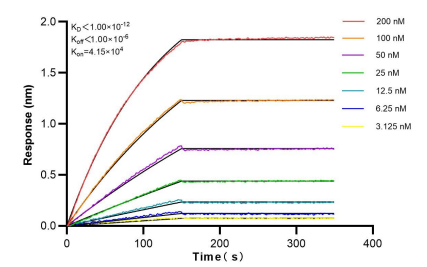
Immunohistochemical analysis of paraffin-embedded mouse kidney tissue slide using 82893-2-RR (MELK antibody) at dilution of 1:200 (under 40x lens). Heat mediated antigen retrieval with Tris-EDTA buffer (pH 9.0). This data was developed using the same antibody clone with 82893-2-PBS in a different storage buffer formulation.



Cytoometric bead array standard curve of MP00075-1, MELK Recombinant Matched Antibody Pair, PBS Only. Capture antibody: 82893-2-PBS. Detection antibody: 82893-3-PBS. Standard: Ag1897. Range: 0.313-20 ng/mL



Cytoelectric bead array standard curve of MP00075-2, MELK Recombinant Matched Antibody Pair, PBS Only. Capture antibody: 82893-4-PBS. Detection antibody: 82893-2-PBS. Standard: Ag1897. Range: 0.313-20 ng/mL



Bi-layer interferometry (BLI) kinetic assays of 82893-2-RR against Human MELK were performed. The affinity constant is below 1 pM.