

For Research Use Only

# HLA-DMA Recombinant antibody

Catalog Number: 82899-1-RR



## Basic Information

<b>Catalog Number:</b> 82899-1-RR	<b>GenBank Accession Number:</b> BC026279	<b>Purification Method:</b> Protein A purification
<b>Size:</b> 100ul , Concentration: 1000 µg/ml by Nanodrop;	<b>GeneID (NCBI):</b> 3108	<b>CloneNo.:</b> 230155D3
<b>Source:</b> Rabbit	<b>Full Name:</b> major histocompatibility complex, class II, DM alpha	
<b>Isotype:</b> IgG	<b>Calculated MW:</b> 261 aa, 29 kDa	
<b>Immunogen Catalog Number:</b> AG2452		

## Applications

**Tested Applications:**  
FC, ELISA

**Species Specificity:**  
Human

## Background Information

Human major histocompatibility complex (MHC) antigens, also referred to as human leukocyte antigens (HLA), are encoded by genes located on the short arm of chromosome 6 (6p21.3). There are two classes of HLA antigens: class I (HLA-A, B and C) and class II (HLA-D). The class II molecules are composed of two non-covalently associated alpha and beta chains. HLA-DMA and HLA-DMB form a functional heterodimer that is critical in the pathway of class II antigen presentation. HLA-DM plays a critical role in catalyzing the release of Class II HLA-associated invariant chain-derived peptides (CLIP) from newly synthesized class II HLA molecules and freeing the peptide binding site for acquisition of antigenic peptides.

## Storage

**Storage:**  
Store at -20°C. Stable for one year after shipment.  
**Storage Buffer:**  
PBS with 0.02% sodium azide and 50% glycerol pH 7.3.  
Aliquoting is unnecessary for -20°C storage

\*\*\* 20ul sizes contain 0.1% BSA

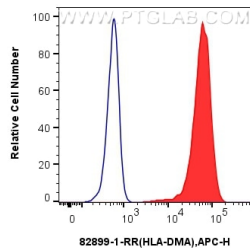
For technical support and original validation data for this product please contact:

T: 1 (888) 4PTGLAB (1-888-478-4522) (toll free  
in USA), or 1(312) 455-8498 (outside USA)

E: [proteintech@ptglab.com](mailto:proteintech@ptglab.com)  
W: [ptglab.com](http://ptglab.com)

This product is exclusively available under Proteintech Group brand and is not available to purchase from any other manufacturer.

## Selected Validation Data



1x10<sup>6</sup> A431 cells were intracellularly stained with 0.13 ug Anti-Human HLA-DMA (82899-1-RR, Clone:230155D3) and APC-Conjugated AffiniPure Goat Anti-Rabbit IgG(H+L) at dilution 1:166 (red), or 0.13 ug Rabbit IgG control Rabbit PolyAb (30000-0-AP, Clone: ) (blue). Cells were fixed and permeabilized with True-Nuclear Transcription Factor Buffer Set.